



PLANNING AND FACILITIES COMMITTEE PUBLIC MEETING AGENDA

The Central Okanagan Board of Education acknowledges that this meeting is being held on the Traditional Territory of the Okanagan People.

DATE: Wednesday, November 21, 2018
TIME: 6:30 pm
LOCATION: School Board Office
1040 Hollywood Road S.
Kelowna, BC

1. AGENDA

Additions/Amendments/Deletions

2. REPORTS/MATTERS ARISING

2.1 Planning and Facilities Committee Public Meeting Report – October 17, 2018
(Attachment)

Pg. 4

3. RECOGNITION/PRESENTATIONS/DELEGATIONS

3.1 Delegation: Naming of the New Middle School in Lake Country: Hank Grenda Middle School

3.2 Delegation: Proposal for "Multi-Use Facility" at Aspen Grove Golf Course
Presenter: Richard Issler
(Attachment)

Pg. 7

4. PUBLIC QUESTION/COMMENT PERIOD

5. COMMITTEE MEMBERS QUERIES/COMMENTS

6. DISCUSSION/ACTION ITEMS

6.1 Urban Aboriginal Head Start Preschool
(Attachment)

Pg. 12

STAFF RECOMMENDATION:

THAT: The Planning and Facilities Committee recommends to the Board of Education:

THAT: The Board of Education grants approval to the Métis Society to build an Urban Aboriginal Head Start Preschool at South Rutland Elementary School.

Pg. 19

6.2 Establishment of Canyon Falls Middle Catchment Boundary
(Attachment)

STAFF RECOMMENDATION:

THAT: The Planning and Facilities Committee recommends to the Board:

THAT: The Board of Education approve the establishment of a middle school catchment boundary for Canyon Falls Middle School as presented at the Planning and Facilities Committee on November 21, 2018.

Pg. 22

6.3 Proposed Catchment Boundary Amendment – Bankhead Elementary and Watson Road Elementary Schools
(Attachment)

STAFF RECOMMENDATION:

THAT: The Planning and Facilities Committee recommends to the Board:

THAT: The Board of Education approve Option #1 elementary catchment boundary amendments for Bankhead Elementary School (include Highpointe Drive) and Watson Road Elementary School as presented at the Planning and Facilities Committee on November 21, 2018

Pg. 33

6.4 Proposed Catchment Boundary for Black Mountain Elementary and Ellison Elementary Schools
(Attachment)

STAFF RECOMMENDATIONS:

THAT: The Planning and Facilities Committee recommends to the Board:

THAT: The Board of Education approve Option #1 (include Toovey Heights) for Black Mountain Elementary School catchment boundary as presented at the Planning and Facilities Committee on November 21, 2018.

AND THAT The Board of Education approve Option #1 for Ellison Elementary School catchment boundary as presented at the Planning and Facilities Committee on November 21, 2018.

7. DISCUSSION/INFORMATION ITEMS

Pg. 48

7.1 School District Portable Information
(Attachment)

Pg. 52

7.2 Rutland Middle School Project – Update
(Attachment)

8. COMMITTEE CORRESPONDENCE

9. ITEMS REQUIRING SPECIAL MENTION

10. RECOMMENDATIONS/REFERRALS TO THE BOARD/COORDINATING COMMITTEE/OTHER COMMITTEES

11. ITEMS FOR FUTURE PLANNING AND FACILITIES COMMITTEE MEETINGS

September	October	November
- Summer Projects Update	- Annual Integrated Pest Management Report - Review of the Long-Term Facility Plan (<i>Info Item</i>)	
January	February	April
- Annual review of Committee's Mandate, Purpose and Function	- Annual Facility Grant (AFG) Plan	- Capital Project Bylaw for AFG
May	June	August
- Transportation Update - Capital Plan Submission	- Energy & Sustainability Presentation	- To be determined

12. FUTURE PLANNING AND FACILITIES COMMITTEE MEETINGS

The 2019 Planning and Facilities Committee Meetings will be determined at the November 28, 2018 Public Board Meeting.

13. MEDIA QUESTIONS

14. ADJOURNMENT

SCHOOL DISTRICT No. 23 – BOARD COMMITTEE REPORT

COMMITTEE: Planning and Facilities Committee Meeting DATE: October 17, 2018

CHAIRPERSON: Trustee Chris Gorman STAFF CONTACT: Mitch Van Aller, Director of Operations

The Committee Chairperson acknowledged that the meeting was being held on the Traditional Territory of the Okanagan People.

In Attendance:

Board Attendees:

Trustee C. Gorman, Chairperson
Trustee D. Butler, Committee Member
Trustee J. Fraser, Committee Member
Trustee M. Baxter
Trustee Cacchioni (*left at 6:45 pm*)

In Attendance:

Staff:

E. Sadlowski, Secretary-Treasurer
M. Van Aller, Director of Operations
D. Widdis, Planning Manager
T. Beaudry, Deputy Superintendent
L. Parker, Executive Assistant (*Recorder*)

Absent:

K. Kaardal, Superintendent of Schools/CEO
S. Kamstra, Assistant Director of Operations

Partner Group Representation:

COPAC S. Shakespeare, President
COPVPA R. Ward, Members Liaison: Middle/Secondary
COTA S. Bauhart, President
CUPE D. Tether, President
DSC T. Schwab, Grade 12 Representative, Rutland Secondary School

Agenda - Additions/Amendments/Deletions

October 17, 2018 Committee Agenda – approved as presented.

Reports/Matters Arising

September 19, 2018 Committee Report – received as distributed.

Delegations:

1. Naming of the New Middle School in Lake Country: Eijiro Koyama

In Attendance:

Bob Hayes, Board Member of Lake Country Heritage and Cultural Society, and the Okanagan Historical Society

Addie Maehara, Granddaughter of Eijiro Koyama

Mr. Hayes presented the impact that the Koyama family had on the history of the Lake Country area, specifically Mr. Eijiro Koyama. There is broad community support for naming the new middle school in Lake Country after the Koyama family. Mr. Hayes asked the Committee to consider when deciding names to put forth to the Board.

2. Urban Aboriginal Head Start Preschool

In Attendance:

Métis Community Services Society of BC (MCSBC):

Kelly L'Hirondelle

Chantelle Colthorpe

Mr. L'Hirondelle and Ms. Colthorpe presented the Urban Aboriginal Head Start Preschool proposal to the Committee for consideration. The preschool would be open to aboriginal children and their families, be free of charge and provide nurturing for children in their early years. A one of a kind program in the area, the government would provide funding for the program based on the number of years in a lease agreement with the District. They have purchased a bus and plan to purchase a double wide accessible portable to house the program, which will

require plumbing for bathrooms and a kitchen. The preschool would be open to students ages 0-6 and their families, and will host 24 children. The proposal needs to be into the Ministry by October 31, 2018.

Committee Members Queries/Comments

Trustee Fraser stated that trustees and students had the opportunity to paint the rainbow sidewalk at the School Board Office on October 17, 2018, which is a great symbol of inclusion in the District.

Discussion/Action Items

1. Urban Aboriginal Head Start Preschool

The Committee discussed the proposal to host an Aboriginal Head Start Preschool on either the South Rutland or Springvalley Elementary School sites. More discussion, planning and community input will be required before a final decision can be made. The Committee expressed their support for the program.

Outcome:

The Planning and Facilities Committee supports further consultation with the South Rutland Elementary and Springvalley Elementary school communities to determine the possibility of providing space for the Urban Aboriginal Head Start Preschool, with a report be provided at the November 21, 2018 Planning and Facilities Committee Meeting.

The Planning and Facilities Committee recommends to the Board of Education:

THAT: The Board of Education support in principle the Partnership Proposal to build an Urban Aboriginal Head Start Preschool on site at either South Rutland Elementary School or Springvalley Elementary School.

2. Naming of the New Middle School in Lake Country

The Committee discussed the submissions and came up with a shortlist of names to recommend to the Board.

Outcome:

The Planning and Facilities Committee recommends to the Board of Education

THAT: The Board consider the following shortlist of names for the new middle school in Lake Country:
Eijiro Koyama Middle School
Hank Grenda Middle School
Aspen Grove Middle School

3. Annual Integrated Pest Management Report

The Director of Operations reviewed the annual report with the Committee.

Outcome:

The Planning and Facilities Committee accepted the memorandum from the Director of Operations as the Annual Report required in Policy 620 – Integrated Pest Management (IPM).

4. Proposed Work Plan for Long-Term Facility Plan Update

The Committee reviewed the timeline and discussed having a partner group member on the steering committee.

Outcome:

The Planning and Facilities Committee recommends to the Board:

THAT: The Board of Education strike a steering committee to undertake the review of the Long-Term Facility Plan as scheduled.

The recommendation will be presented to the Coordinating Committee to decide on timing.

Items of Special Mention

The Deputy Superintendent stated that Admin Procedures are currently under review for updates. The Admin Procedure regarding communication on the spraying of orchards will require some extended consultation in writing the procedure.

On behalf of the Committee, the Chairperson thanked Lori Parker for her work with the Board and the Committee, as this was her last meeting.

Lori Parker, Executive Assistant to the Secretary-Treasurer/CFO and Board of Education stated her appreciation to the District, Staff, Board and everyone that she had the opportunity to work with and learn from.

Recommendations to the Board

Public Board Meeting – October 24, 2018

- Urban Aboriginal Head Start Preschool (Action Item)

Public Board Meeting – November 14, 2018

- Annual Integrated Pest Management Report (Action Item)
- Naming of the New Middle School in Lake Country (Action Item)

Future Public Meeting

- Proposed Work Plan for Long-Term Facility Plan Update (Action Item)

Items for Future Planning and Facilities Committee Meetings

September	October	November
- Summer Projects Update	- Annual Integrated Pest Management Report - Final recommendations for naming of Lake Country Middle School - Review of the Long-Term Facility Plan (Info Item)	
January	February	April
- Annual review of Committee's Mandate, Purpose and Function	- Annual Facility Grant (AFG) Plan	- Capital Project Bylaw for AFG
May	June	August
- Transportation Update - Capital Plan Submission	- Energy & Sustainability Presentation	- To be determined

Meeting Schedule

Wednesday, November 21, 2018 6:00 pm

Questions - Please Contact:

Chris Gorman, Chairperson Phone: 250-575-2731 email: Christopher.Gorman@sd23.bc.ca
 Mitch Van Aller, Director of Operations Phone: 250-870-5150 email: Mitch.Vanaller@sd23.bc.ca

Chris Gorman, Chairperson

To: SD23 Board
SD23 Planning and Facilities Group
SD23 Trustees
Lorwal Golf and Turf Solutions (Grounds Guys Landscape Management)

From: Richard Issler P.Eng, M.Sc, on behalf of concerned Lake Country residents

Date: Nov 10, 2018 (1st version Aug 5, 2018)

Please consider the attached proposal, which offers options for the SD23 (School District 23) development plan for Aspen Golf property. The proposal suggests options for turning the Aspen Golf property into a multi-use facility that will serve the needs of both SD23 and the Lake Country community, with benefits for both.

Thank You

Richard Issler
250-766-0479
richardissler@hotmail.com

Proposal For “Multi-use Facility” at Aspen Golf Course

Proposal Synopsis

This proposal offers options that we hope SD23 (School District 23) will consider for the Aspen Golf property located at 10303 Bottom Wood Lake Road in LC (Lake Country), adjacent to the George Elliot school. The options offered would allow for a facility that serves the needs of, and provides benefits to, both the LC community and SD23. We term this a “multi-use facility”.

Our main goal is to increase the “Quality of Life” for LC residents. We believe that having a new school AND the Aspen Golf Course AND a place for local businesses to operate in our community would achieve this result.

History

The Aspen Grove Golf Course has been a central part of the LC community since 1979, providing an inexpensive all-age recreational facility, and tourist attraction. In its prime it also had a restaurant, banquet/convention room, racquet ball and volleyball courts. SD23 bought the property in 2014.

Current Situation

The Aspen Golf Course is owned by SD23 but profitably operated and maintained by Lorwal Golf and Turf Solutions (Lorwal). A variety of local businesses rent space in the restaurant and the banquet/convention room.

SD23 has closed the Golf Course and plans to build a new school on Wood Bottom Lake Rd. adjacent to Swalwell Park, as well as installing two soccer fields on the Golf Course land.

Suggested Options

Option #1: Municipal Multi-use

There is an existing field that is part of Swalwell Park, adjacent to the new school location. If an agreement could be reached between LC and SD23 to allow school use of this field the Golf Course could be kept fully operational.

Option #2: Land Swap

We have local investors who fully support this proposal and are willing to purchase land adjacent to Swalwell Park. If a “land swap” agreement could be reached between the investors and SD23 then new soccer fields could be installed on this land, leaving the course fully operational.

Option #3: Multi-use

Install soccer fields as shown in Fig 1, but continue operating the Golf Course as a 6-hole facility.

Note: Lorwal Golf and Turf have expressed their willingness to continue operating the Golf Course if any of these options are adopted.

Benefits of the proposed “Multi-use Facility”

- SD23 could realize financial benefits from Golf revenues.
- SD23 could lower their maintenance costs for the property.
- SD23 could offer courses in Horticulture to aid in maintenance of the course.
- SD23 would have a facility for continuing their student Golf Academy.
- LC would keep an inexpensive Recreational Facility for all age groups.
- LC would keep a Tourist attraction.
- LC local businesses would benefit from spending by residents and tourists.

Benefits if the Restaurant and Banquet Facilities are functional

- SD23 could offer courses in Small Business Management and Culinary Arts. Students could learn how to prepare food, and operate a business/restaurant.
- LC would retain two facilities that attract residents and tourists.
- Local small businesses could maintain their operations in the banquet room.

Further Notes

- In preceding decades golf experienced a boom, and many small inexpensive courses were removed and bigger more expensive courses built. In recent years the PGA of America has noticed a decline in people who can afford the time and money required to play these big courses. They have developed a “Just Play 9” initiative which encourages the use and construction of smaller less expensive courses, exactly what we already have with Aspen Golf.
- There are many municipalities in BC which are now pursuing options for the “multi-use” of government facilities. We believe this proposal presents an opportunity for SD23 to look to the future and be in the forefront of both the “Just Play 9” and the municipal multi-use initiatives.
- The Creekside Theatre on the George Elliott property has already set a precedent for multi-use of school facilities in LC, and is very successful.
- In 2014 we presented a petition to the LC Civic Council with hundreds of signatures opposing the sale of Aspen Golf. We currently have another petition with approx 700 signatures, a clear indication of the level of community support for this proposal.

Conclusion

We believe that the removal of Aspen Golf Course, an inexpensive all-age recreational facility, profitable business venture, and tourist attraction, is unnecessary and would be detrimental to the community of Lake Country.

This proposal has intentionally been kept brief, our hope is to open a dialogue with SD23 which would permit input from LC residents and a more thorough discussion of the options before any development plan is finalized.

We realize that in order to implement any or all of this proposal a lot of work and planning must be done, and that it may take some time to accomplish. We are merely making suggestions in an attempt to find a solution that would make our community a better place to live.

We respectfully request that you consider this proposal, and the opportunity it presents for SD23 and LC to be at the forefront of the “multi-use” movement. Also to consider the wishes of all LC residents, and look to the future, once the golf course is gone it will never come back.

Thank you

Figure 1. Aspen Golf Course - one option for Soccer Field locations





Memorandum

Date: November 16, 2018
To: Planning and Facilities Committee
From: Eileen Sadlowski, Secretary-Treasurer/CFO
Prepared by: Terry-Lee Beaudry, Deputy Superintendent of Schools
Mitch Vanaller, Director of Operations

Action Item: Urban Aboriginal Head Start Preschool

1.0 ISSUE STATEMENT

The Central Okanagan Public Schools Early Learning Team has been working alongside the Suxkenxitluk kl cecamala ("those who care for the children") Aboriginal Early Years Table and, together, have been exploring ways to enhance transitions for families in more culturally responsive and culturally safe ways. As part of this work together, the Métis Society put forward a proposal to the Aboriginal Head Start Association of BC (AHSABC) to fund an Urban Aboriginal Head Start program in the Rutland area (to be named Awasisak Achakos Head Start). With "agreement in principle" in place from the AHSABC, the Métis Society is seeking a location within the Rutland area. As such, the Métis Society has proposed to partner with the Board of Education to establish an Urban Aboriginal Head Start Preschool Program on an elementary school site in Rutland. All costs and funding for this proposed early years project will be the sole responsibility of AHSABC in partnership with the Métis Society.

2.0 RELEVANT BOARD MOTION/DIRECTION

As per Board Policy 701 – Early Years Partnerships (see Appendix A), the Board of Education recognizes the importance of the early years and the shared responsibilities in ensuring a safe and optimal transition from home to school for our earliest learners. The Board of Education believes that certain opportunities which provide for partnerships between the community and schools are beneficial to student success. Partnerships which enhance the preschool years and support all facets of early learning development (social, emotional, physical, creative, and intellectual development) are important to the Board.

At the October 24, 2018 Public Board Meeting, the following was passed:

18P-136

THAT: The Board of Education support, in principle, the Partnership Proposal to build an Urban Aboriginal Head Start Preschool on site at either South Rutland Elementary School or Springvalley Elementary School, as attached to the Agenda and as presented at the October 24, 2018 Public Board Meeting.

3.0 BACKGROUND

The Aboriginal Head Start in Urban and Northern Communities (AHSUNC) Program, created in 1995, is a national community-based early intervention program. The program targets three distinct groups of Indigenous people living in urban and northern communities: First Nations, Métis and Inuit. In recent years, the program reach has ranged from 4600-4800 children annually at 134 sites across Canada.

This Aboriginal Head Start off-reserve program aims to enhance child development and school readiness of Indigenous children. The program provides no-fee child care, which is complemented by other programs and supports such as programs for parent education and supports for inclusion of children with special needs. Indigenous community organizations design and deliver holistic programs to enhance the spiritual, emotional, physical and social wellbeing of Indigenous children aged 0-6 and their families while supporting their parents and guardians as their primary teachers.

AHSUNC sites typically provide programs for Indigenous children (3-5 years of age) focused on six program components: Indigenous culture and language; education and school readiness; health promotion; nutrition; social support; and parental involvement.

These are intended to work holistically to support Indigenous children's early childhood development and well-being, and prepare them for a successful transition to school.

4.0 POINTS FOR CONSIDERATION

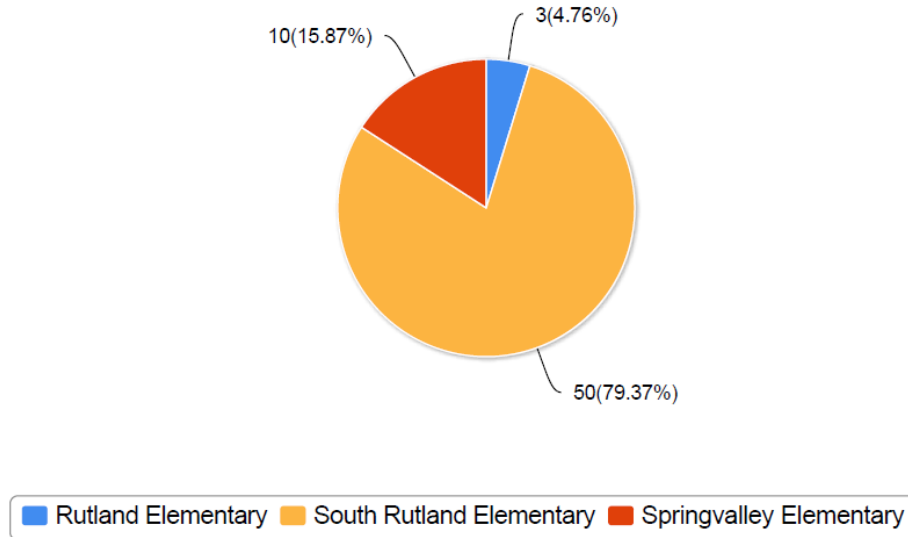
At the October 17th, 2018 Planning and Facilities Meeting, the Committee recommended that the Métis Society and staff consult with parents/caregivers of Indigenous preschoolers to consider the viability of locating the Urban Aboriginal Head Start Preschool at either Springvalley Elementary School or South Rutland Elementary School.

The Métis Society provided an overview of the Urban Aboriginal Head Start Program to the Springvalley Parent Advisory Council on Wednesday, November 7, 2018 and presented to the South Rutland Parent Advisory Council on Thursday, November 8, 2018. Over 12 parents were present at each meeting. On November 13, 2018, a forum was held at Rutland Secondary, providing an opportunity to discuss the proposed program and viability of each school site. Members of the Rutland community were also invited to provide their feedback through an online survey posted on the District and Rutland schools' websites.

Over 50 parents responded to the on-line survey. An analysis of the data reflected support for both school sites.

Parent Responses Received from Rutland Schools

1. Please indicate the Rutland school in which your child(ren) attend:



Staff have concluded that South Rutland Elementary and Springvalley Elementary meet the criteria for community need, accessibility, as well as, site/facility space. Both schools welcome the opportunity to partner with the Urban Aboriginal Head Start program. Both school sites are relatively flat and accessible. Utilities are accessible for water, sewer, gas, and power at each school site. However, both school sites will need to plan for additional parking and traffic flow.

It should also be noted that Quigley Elementary School and Pearson Road Elementary School currently have early learning programs being offered that serve Aboriginal children and families.

South Rutland Elementary



Springvalley Elementary



At South Rutland Elementary School, the proposed location:

- is closer to the gym and school access; and
- is farther away from the school parking lot.
- Utility work would be slightly more involved, requiring some additional site prep.

At Springvalley Elementary School, the proposed location:

- is closer to the parking lot;
- requires a paved/concrete walkway to access the facility;
- requires the relocation of the existing portable at Springvalley Elementary to be relocated to Springvalley Middle School, providing this space for the Urban Aboriginal Head Start Program.

In addition to receiving feedback on the preferred location of the Urban Aboriginal Head Start Program, the majority of parents strongly supported the concept of an Urban Aboriginal Head Start Program and expressed interest in enrolling their preschool child/children. However, some parents expressed concern with possible overcrowding, transportation issues, location of the portable infringing on playground space, parking, and exclusivity of the program.

Although South Rutland Elementary School and Springvalley Elementary School sites are both viable options for placement of an Urban Aboriginal Head Start Program, staff recommend placement at South Rutland Elementary School as there are minimal preschool options in Central Rutland. Additionally, the South Rutland Elementary School site requires less initial site preparation.

5.0 OPTIONS FOR ACTION

- 5.1 Support the recommendation.
- 5.2 Select a different site for placement of the Urban Aboriginal HeadStart Preschool.
- 5.3 Request additional information.

6.0 SECRETARY-TREASURER/CFO'S COMMENTS

Offering support through a dedicated site to an Urban Aboriginal Head Start program enables us to further expand the Preschool offerings in our community. These Partnerships have played a significant role in enhancing the preschool years and supporting early learning development.

7.0 STAFF RECOMMENDATION

THAT: The Planning and Facilities Committee recommends to the Board of Education:

THAT: The Board of Education grants approval to the Métis Society to build an Urban Aboriginal Head Start Preschool at South Rutland Elementary School.

8.0 APPENDIX

- A. Policy 701 – Early Years Partnership



Section Seven: Community Partnerships

701 – EARLY YEARS PARTNERSHIPS

Introduction

The Board of Education recognizes the importance of the early years and the shared responsibilities in ensuring a safe and optimal transition from home to school for our earliest learners.

The Board of Education believes that certain opportunities which provide for partnerships between the community and schools are beneficial to student success. Partnerships which enhance the preschool years and support all facets of early learning development (social, emotional, physical, creative and intellectual development) are important to the Board.

The Board defines Early Years as 0-8 years of age in accordance with the National Association for Education of Young Children's (NAEYC) definition of early childhood.

Policy

The Board has established an Early Years Partnership Committee which includes trustees, parents, teachers, principals/vice-principals, district staff, child advocacy agencies, and health and childcare providers. The committee's mandate is to promote and coordinate the ongoing expansion of early childhood opportunities (including daycare, preschool, StrongStart, and out of school care), in adherence with Board of Education policies and procedures.

1. Guiding Principles

The Board of Education believes in the importance of:

1.1 Accessibility of early childhood care and learning for families

Early Years Partnerships will:

- promote low-cost space to operators for program operation
- ensure that fair and discreet processes are in place to enable the attendance of preschoolers from low-income families through subsidy provided by the early childhood care operator at a rate established by the Board of Education
- monitor available space within schools for early childhood opportunities

1.2 Well-supported transitions from home to school

Early Years Partnerships will:

- support the Early Years Centre models so that community services can be connected to all families, recognizing the distinct needs of Aboriginal families as well as families from culturally diverse backgrounds



Section Seven: Community Partnerships

“Together We Learn”

- promote the integration of district and community based events/activities/programs to help ensure supported, safe, seamless transitioning from home to school
- promote parent and community involvement in the establishment and operation of the early childhood opportunities in the Central Okanagan School District.

1.3 **Early Years programs that support the health and development of the whole child**

Early Years Partnerships will:

- promote research-based models and philosophies to meet diverse needs of children, family and community
- support the Central Okanagan School District’s *Early Learning and Development Framework for 3-5 Year Olds* (based on the B.C. Primary Program)
- support *The B.C. Early Learning Framework* (co-published by the Ministry of Health and the Ministry of Children and Family Development and issued by the Early Learning Advisory Group)
- support and promote ongoing professional learning opportunities for parents as partners, childcare providers, early childhood educators and primary teachers (K-2)
- seek opportunities to support families through liaisons with multiple community service providers (recreation, health, dental, mental health, Aboriginal services etc.)

Date Agreed: September 28, 2005

Date Amended: November 25, 2015

Related Document: Early Learning and Development Framework for
3-5 Year Olds; BC Early Learning Framework



Memorandum

Date: November 21, 2018
To: Planning and Facilities Committee
From: Mitch Van Aller, Director of Operations
Prepared By: David Widdis, Planning Manager

Action Item: Establishment of Canyon Falls Middle School Catchment Boundary

1.0 ISSUE STATEMENT

Catchment boundaries are established to define a geographic area from which students are eligible to attend a specific school. The boundaries help manage student enrolment and define transportation eligibility.

2.0 RELEVANT BOARD MOTION/DIRECTION

Main

18P-063 MOVED by Trustee Gorman, SECONDED by Trustee Cacchioni,
THAT: The Board of Education open Canyon Falls Middle School for Grade 6 and 7 students in 2019 for the Okanagan Mission family of schools.
CARRIED

Main

18P-064 MOVED by Trustee Gorman; SECONDED by Trustee Cacchioni,
AND THAT: Grade 7 students already in attendance at Okanagan Mission Secondary School, and transitioning into Grade 8, complete their Grade 8 year at Okanagan Mission Secondary School in 2019.
CARRIED

Main

18P-065 MOVED by Trustee Gorman, SECONDED by Trustee Cacchioni,
AND THAT: Canyon Falls Middle School will enroll Grade 6, 7 and 8 students in September 2020 and Okanagan Mission Secondary School will become a Grade 9 to 12 school.
CARRIED

3.0 BACKGROUND

Early in 2018, the District started construction on Canyon Falls Middle School in the OK Mission Family of Schools. This middle school will be the only middle school in the Mission area and is targeted to open September 2019. Okanagan Mission family of schools consists of

three elementary schools and one secondary school. The opening of Canyon Falls Middle School will allow this family of schools to implement the District grade configuration of K-5, 6- 8 and 9-12.

Prior to the opening of registration in February 2019 for Canyon Falls Middle School, the District needs to establish a catchment boundary for the middle school. Canyon Falls Middle School will serve the Okanagan Mission area which is similar to Okanagan Mission Secondary School. The elementary schools will feed into the middle school which will feed into the Okanagan Mission Secondary School for the area. Since the middle school will serve the Mission area, the recommended boundary should be the same as the secondary school. As the current secondary school catchment accommodates grade 7 and 8 students, the same catchment should be consistent for the new middle school. Appendix A shows the proposed catchment boundary.

4.0 POINTS FOR CONSIDERATION

1. The establishment of the boundary does not impact the Okanagan Mission family of schools
2. Creating catchment boundaries will help manage student enrolment in the schools
3. Transportation eligibility is consistent with policy and regulations
4. The District recognizes that there is growing pressure for space, particularly within the Glenmore Corridor and its feeder schools. The District's Long Term Facility Plan is scheduled for review this fall and winter. As a part of that review, catchment boundaries in the Okanagan Mission schools will be reevaluated to determine the potential for alleviating some of this pressure. Based on the discussions, growth pressures, capacity issues, some catchment boundaries for schools may need to be amended.

5.0 OPTIONS FOR ACTION

1. Approve the recommended catchment boundary as presented.
2. Provide alternate direction to staff.

6.0 DIRECTOR'S COMMENTS

This will establish the new catchment boundary for Canyon Falls Middle School and allow for appropriate boundaries to be utilized for transportation.

7.0 STAFF RECOMMENDATION

THAT: The Planning and Facilities Committee recommends to the Board:

THAT: The Board of Education approve the establishment of a middle school catchment boundary for Canyon Falls Middle School as presented at the Planning and Facilities Committee on November 21, 2018

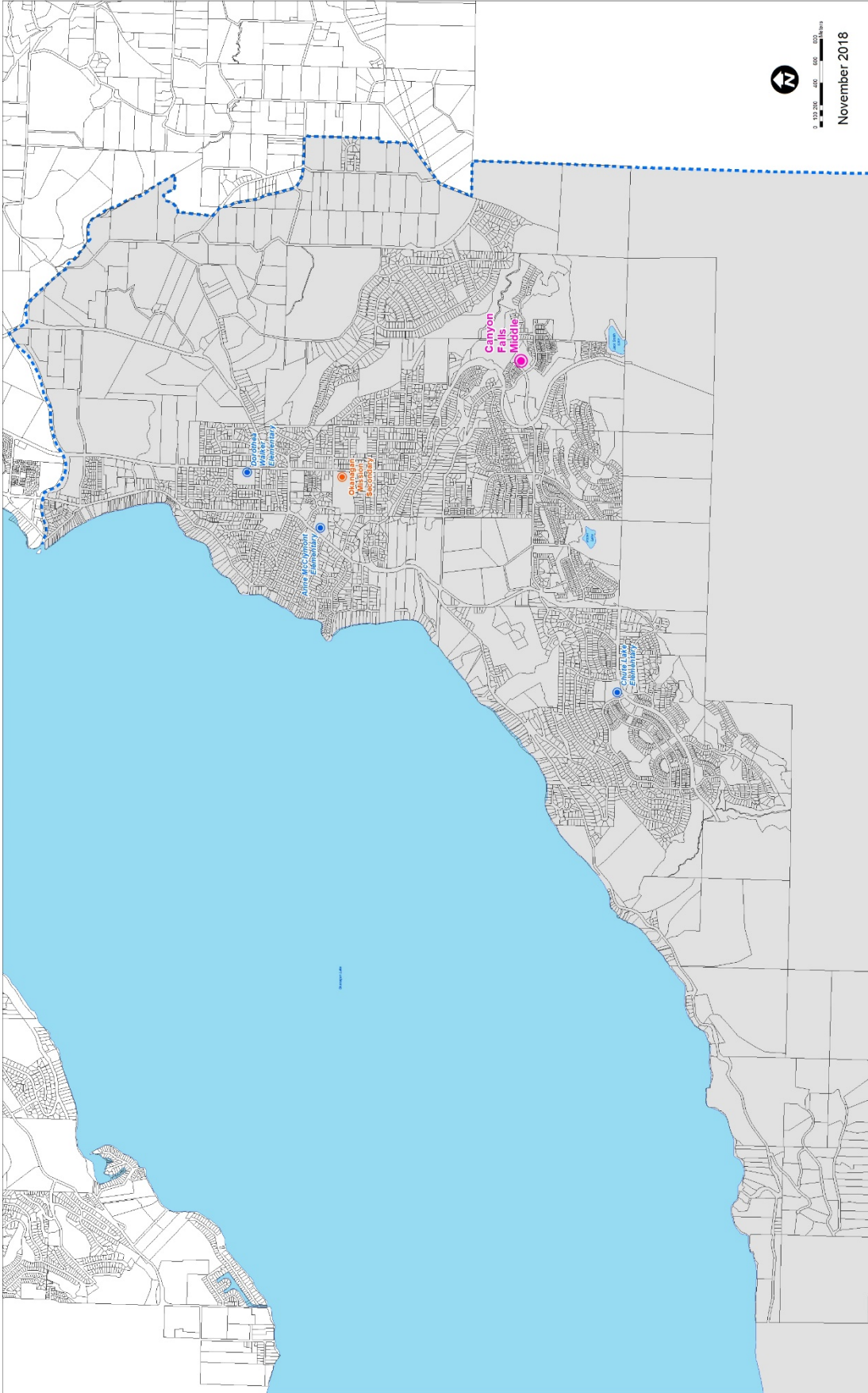
8.0 APPENDIX

- A. Proposed Canyon Falls Middle School Catchment Boundary.

APPENDIX A



PROPOSED - Canyon Falls Middle School Catchment Boundary



0 100 200 400 600 800 Meters
November 2018



Memorandum

Date: November 21, 2018
To: Planning and Facilities Committee
From: Eileen Sadlowski, Secretary-Treasurer/CFO
Prepared By: David Widdis, Planning Manager

Action Item: Proposed Catchment Boundary Amendment –
Bankhead Elementary and Watson Road Elementary Schools

1.0 ISSUE STATEMENT

Recently a new subdivision was created around the Highpointe Drive and Clifton Road area. The current Bankhead Elementary School and Watson Road Elementary School catchment boundary splits the subdivision and in some cases the boundary splits individual properties which creates uncertainty when registering for an elementary school.

2.0 RELEVANT BOARD MOTION/DIRECTION

Main 18P-100

MOVED by Trustee Gorman, SECONDED by Trustee Fraser,

THAT: Staff proceed with a Catchment Area Review for Bankhead Elementary and Watson Road Elementary Schools.

3.0 BACKGROUND

The Board of Education approved a catchment review for Bankhead Elementary and Watson Road Elementary schools this past September, to explore boundary options for the schools that would best follow road centrelines and property boundaries.

School District staff members have reviewed the demographics, future growth projections and facilities' capacities, as well as attended Parent Advisory Council meetings at these schools and Glenmore Elementary School to introduce the catchment area review and listen to parental input for consideration.

During the Parent Advisory Committee meetings Staff heard consistent messaging:

- Keeping neighbourhoods and peers together is important
- Keeping families together is important
- Ensuring the schools are sustainable for the long-term
- Provide transportation certainty was understandable for the School District

Staff have received one comment regarding this catchment review. The person supported the option to include the Highpointe Drive area in the Bankhead Catchment area.

4.0 POINTS FOR CONSIDERATION

1. The proposed boundary line follows road centre lines and property lines rather than having boundary line go through buildings
2. The boundary change will impact siblings of current Elementary students. When the siblings register for school, the siblings will be placed in priority as defined in Policy 405R, which will not guarantee them a place in the elementary School where the sibling attends.
3. Sixteen students located in the Highpointe Dr area, 11 attend Watson Rd; 4 attend Glenmore and 1 attends Bankhead
4. Move Highpointe Drive area to Bankhead Elementary
 - a. Current students of the schools can remain at the schools
 - b. Transportation eligibility may be impacted if the area is included in the Bankhead Elementary catchment, the area to the west of Vista View Lane will be bus eligible. As of September 2018, there are no elementary school students in this area
 - c. Bankhead Elementary has space to accommodate students over the next ten years
 - d. Siblings of current students not yet registered will attend Bankhead Elementary School to keep families together
5. Move Highpointe Drive area to Watson Road Elementary
 - a. Current students of the schools can remain at the schools
 - b. Majority of families in the neighbourhood (11 students) currently attend Watson Road Elementary School
 - c. Siblings of current students not yet registered will attend Watson Road School to keep families together
 - d. Current enrolment projections indicate Watson Road Elementary will continue to exceed its capacity over the next ten years;

5.0 OPTIONS FOR ACTION

1. Recommend that the Board of Education approve the catchment boundary changes as presented;
2. Provide additional or different direction.

6.0 SECRETARY-TREASURER'S COMMENTS

Establishing the catchments for Bankhead and Watson Road as recommended will help to manage future enrolment growth that is anticipated in the Glenmore Valley area.

7.0 STAFF RECOMMENDATION

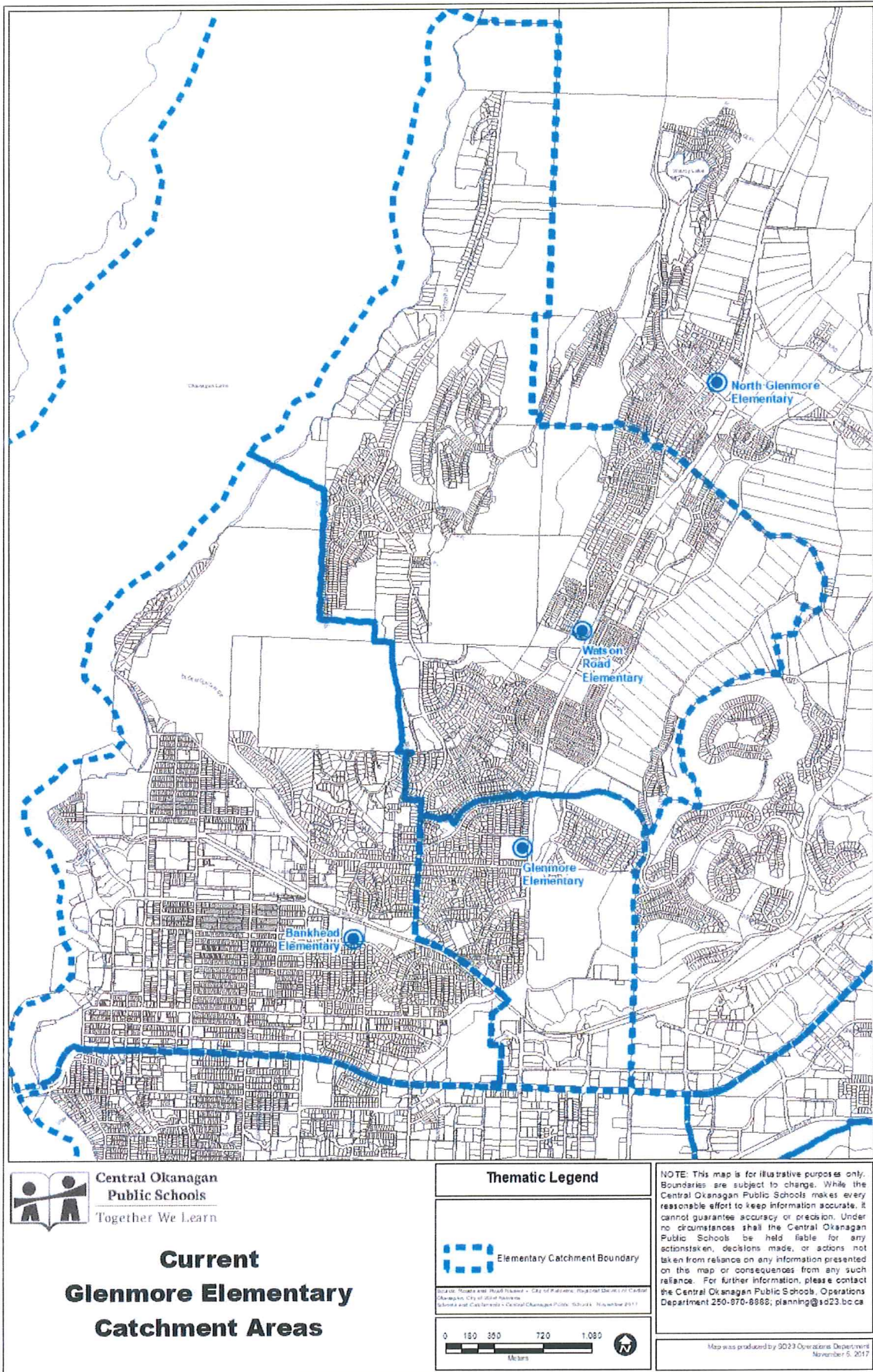
THAT: The Planning and Facilities Committee recommends to the Board:

THAT: The Board of Education approve Option #1 elementary catchment boundary amendments for Bankhead Elementary School (include Highpointe Drive) and Watson Road Elementary School as presented at the Planning and Facilities Committee on November 21, 2018

8.0 APPENDICES

- A. Current Catchment Boundary
- B. Background Information and FAQ for Bankhead Elementary School and Watson Road Elementary Catchment Review
- C. Glenmore area Elementary Schools Enrolments and Projections
- D. Option #1 Catchment Boundary to move to Bankhead Elementary School
- E. Option #2 Catchment Boundary to move to Watson Road Elementary School

Appendix A



Central Okanagan
Public Schools
Together We Learn

**Current
Glenmore Elementary
Catchment Areas**

Thematic Legend

 Elementary Catchment Boundary

Source: Maps and Road Names - City of Penticton, District of Okanagan
Mapworks, City of Okanagan
Schools and Catchments - Central Okanagan Public Schools, November 2017



NOTE: This map is for illustrative purposes only. Boundaries are subject to change. While the Central Okanagan Public Schools makes every reasonable effort to keep information accurate, it cannot guarantee accuracy or precision. Under no circumstances shall the Central Okanagan Public Schools be held liable for any action taken, decisions made, or actions not taken from reliance on any information presented on the map or consequences from any such reliance. For further information, please contact the Central Okanagan Public Schools, Operations Department 250-870-6865, planning@so23.bc.ca

Map was produced by SO23 Operations Department
November 5, 2017



Catchment Boundary Review

Bankhead Elementary and Watson Road Elementary Schools

School District staff presented to the Planning and Facilities (P&F) Committee, with recommendations, the process for review of Bankhead Elementary and Watson Road Elementary Catchment Areas. Recently a new subdivision was created around the Highpointe Drive and Clifton Road area. The current Bankhead Elementary and Watson Elementary catchment boundary splits the subdivision and in some cases the boundary splits individual properties which creates uncertainty when registering for an elementary school

A catchment review is to be a collaborative process to minimize disruptions to families, make the most effective use of existing facilities, provide certainty for transportation eligibility and create sustainable enrolment levels in these elementary schools. The (P&F) Committee recommended that the Board of Education proceed with the Catchment review for Bankhead and Watson Road Elementary Schools.

SD23 has established policies (Policy 405 and 405R) for setting/changing catchment areas. The following are the principles to follow for catchment review:

- reflect traditional neighbourhoods, subdivisions and regions;
- minimize safety concerns for elementary students as a result of major roadways or other known hazards;
- reflect long-term development to minimize stress caused by frequently changing boundaries in rapidly growing/declining areas;
- maximize the efficiency of schools and the transportation system;
- maintain a cohort of students at each grade level offered at the school, to support the long-term sustainability of the school.

The timeline for this catchment review started in September with the development of some options for this area. Presentations were made at Parent Advisory Committee meetings and the staff are expecting to provide a recommendation to the Board in November/December. Any changes to the catchment boundaries, if approved by the Board, will be implemented for September 2019.

The attachments are the current catchment boundaries and draft options for discussion purposes.

If you have any questions, please contact David Widdis, Planning Manager at 250-470-3276

Frequently Asked Questions

1. *What types of changes can be proposed?*

The types of changes that could be proposed include:

- changes to school boundaries (the catchment area for a school could change)

2. *What are the issues in my community?*

The shared catchment boundary for Bankhead Elementary School and Watson Road Elementary School divides a subdivision off Highpointe Drive that impacts the neighbourhood that includes Boynton Place, Traditions Crescent and Sladen Circle. The catchment review is to redraw the boundary that would not divide properties but following along streets or property lines.

3. *When will these changes come into effect?*

The proposed recommendation would come forward to the Planning and Facilities Committee meeting in November/December and moved forward to a public Board of Trustees meeting. If approved by the Board, the implementation for any change would be for September 2019.

4. *What will come forward to the Planning and Facilities Committee for review?*

The way the catchment boundary review process works, staff must develop a proposed plan detailing changes affecting schools in the review area. At this time, it is a proposed plan for change. That proposal is subject to consultation. After the consultation process, staff will make recommendations to the Planning and Facilities Committee and the committee will vote on those recommendations. The recommendations of the committee then go to Board for final approval.

5. *What will happen to students if these changes are made?*

The impact on students depends on the proposed change at the school. Every effort has been made to keep student cohorts together.

6. *How can parents and guardians get involved?*

Parents, guardians, students and community members will have an opportunity to learn more about the recommended plan and to provide feedback in the fall. This will occur in several ways, including:

- Attending a Parent Advisory Committee meeting;
- Provide written input to Planning.Review@sd23.bc.ca
- Attending a Planning and Facilities Committee or Board meeting.

7. *What students will have to move from one school to another? Can all existing students remain in their current school?*

Students who are in their current school this current year will continue to stay in the school until they move to middle school. If the catchment boundary is approved for September 2019, any new students applying to the school will be placed in priority based on Policy 405.

8. *Will siblings have to attend different schools?*

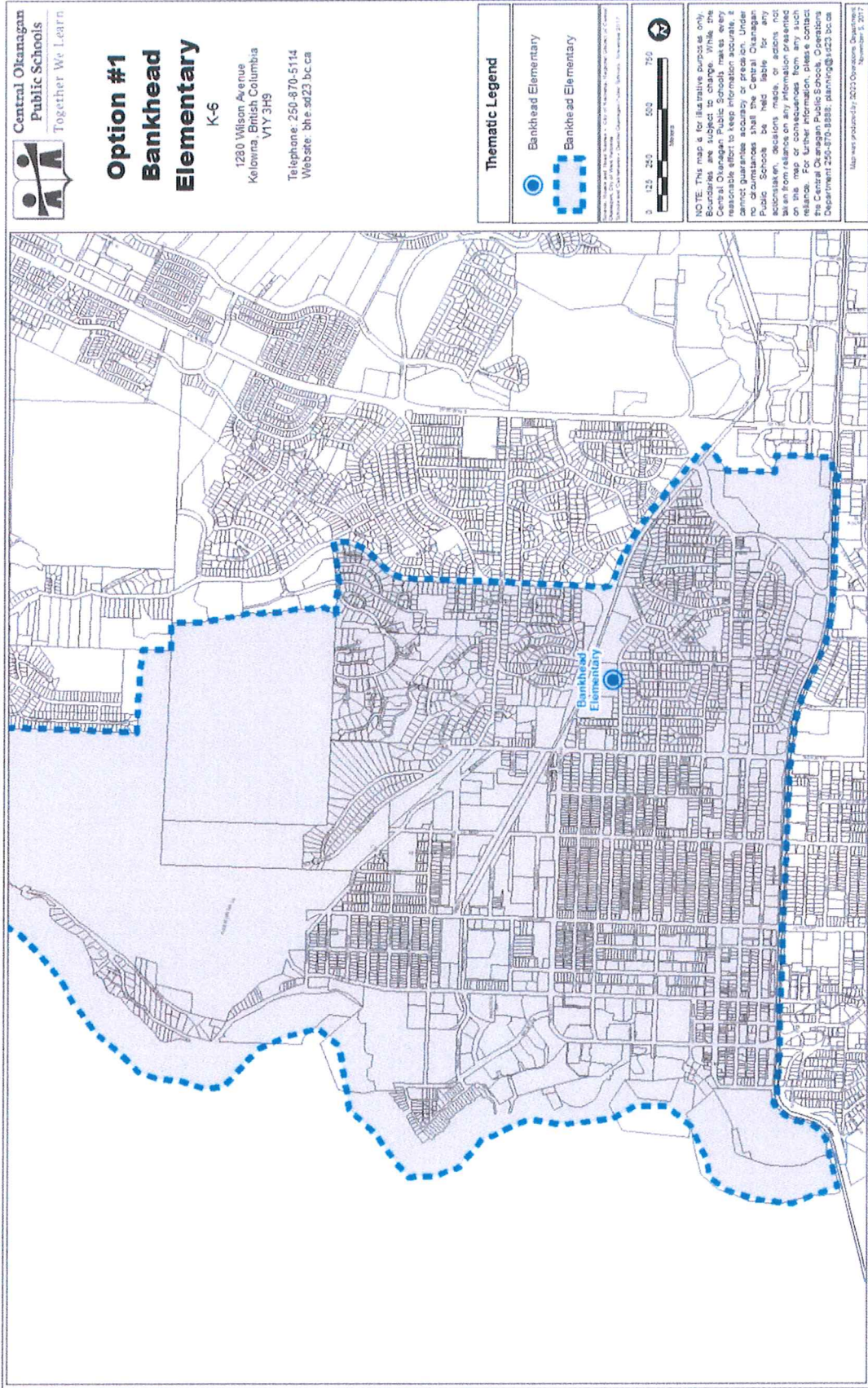
The Board of Education policy places a high priority on keeping siblings together, and the intent is to allow siblings to stay together if that is what families decide to do. Any changes that are recommended are to cause the least disruption to families in the area. Here are two examples of unique circumstances, which demonstrate how siblings could stay together:

- **Scenario 1:** Both siblings attend Bankhead Elementary School but are now in catchment for Watson Elementary School. The students are able to stay in the school until they are able to move to the middle school.
- **Scenario 2:** One sibling attends Bankhead Elementary School and a younger sibling is not currently attending a school. This situation is reviewed on a case by case basis. In previous catchment reviews, the Board has suspended policy to allow the younger sibling to attend the same school as the older sibling.

Appendix C

NORTH CENTRAL KELOWNA FAMILY PROJECTIONS: SD23 PROJECTIONS														
Updated Sept 28, 2018		Enrolment			Projections									
School	Nom Cap	2016	2017	2018	2019	2020	2021	2022	2023	2024	2025	2026	2027	2028
		K-6	K-6	K-6	K-6	K-6	K-6	K-6	K-6	K-6	K-6	K-6	K-6	K-6
Bankhead Elementary	415	275	286	315	326	332	325	323	323	341	340	342	345	346
Glenmore Elementary	515	650	636	652	651	630	620	589	589	593	570	571	572	574
North Glenmore Elementary	505	500	505	555	555	590	614	632	641	673	682	701	697	697
Watson Elementary	530	559	565	555	576	574	574	586	588	598	603	597	608	606

Appendix D





**Option #1
Watson Road
Elementary**
K-6

475 Yates Road
Kelowna, British Columbia
V1V 1R3
Phone: (250) 870-5137
Website: wat.sd23.bc.ca

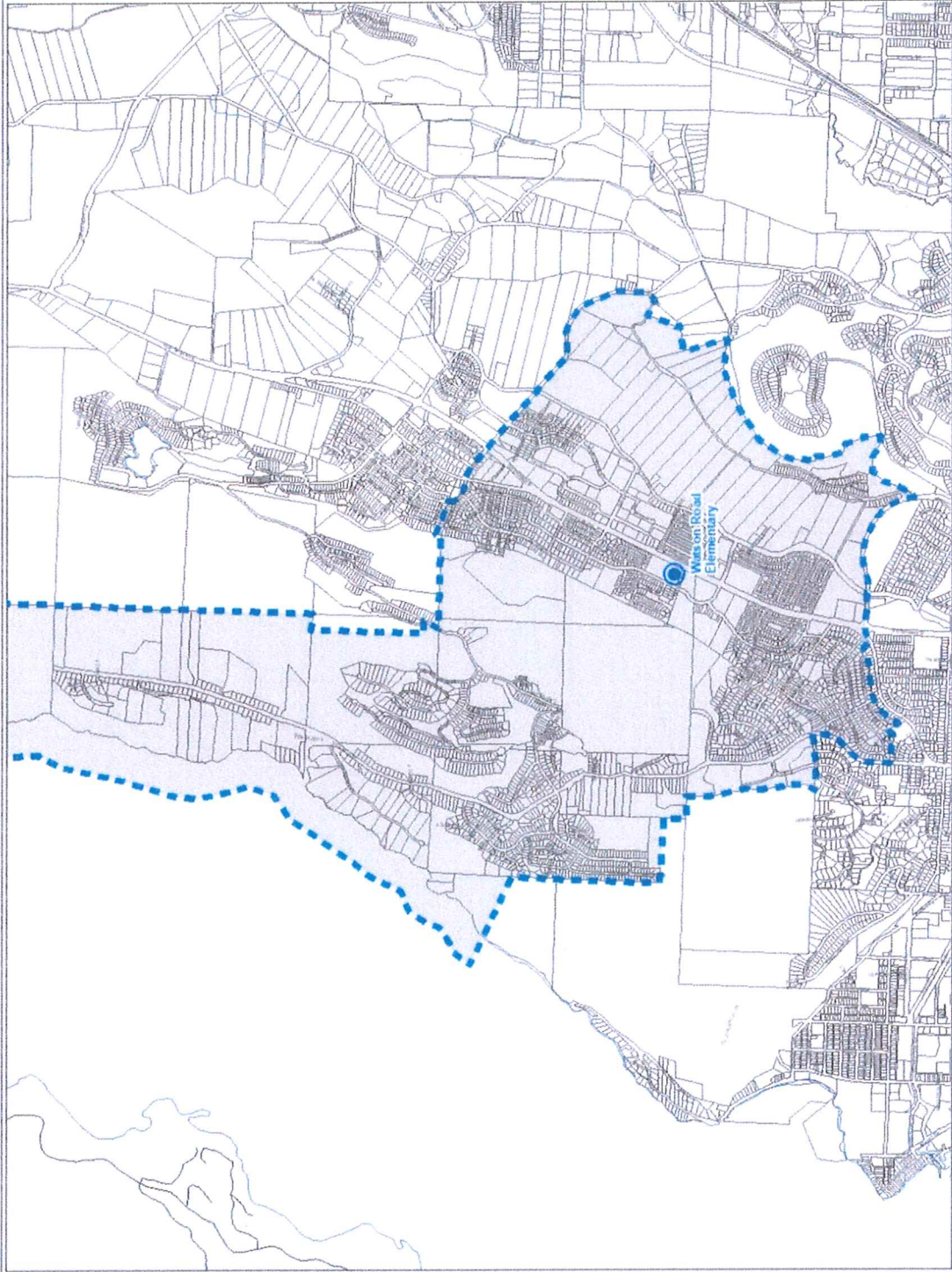
Thematic Legend

-  Watson Road Elementary
-  Watson Elementary



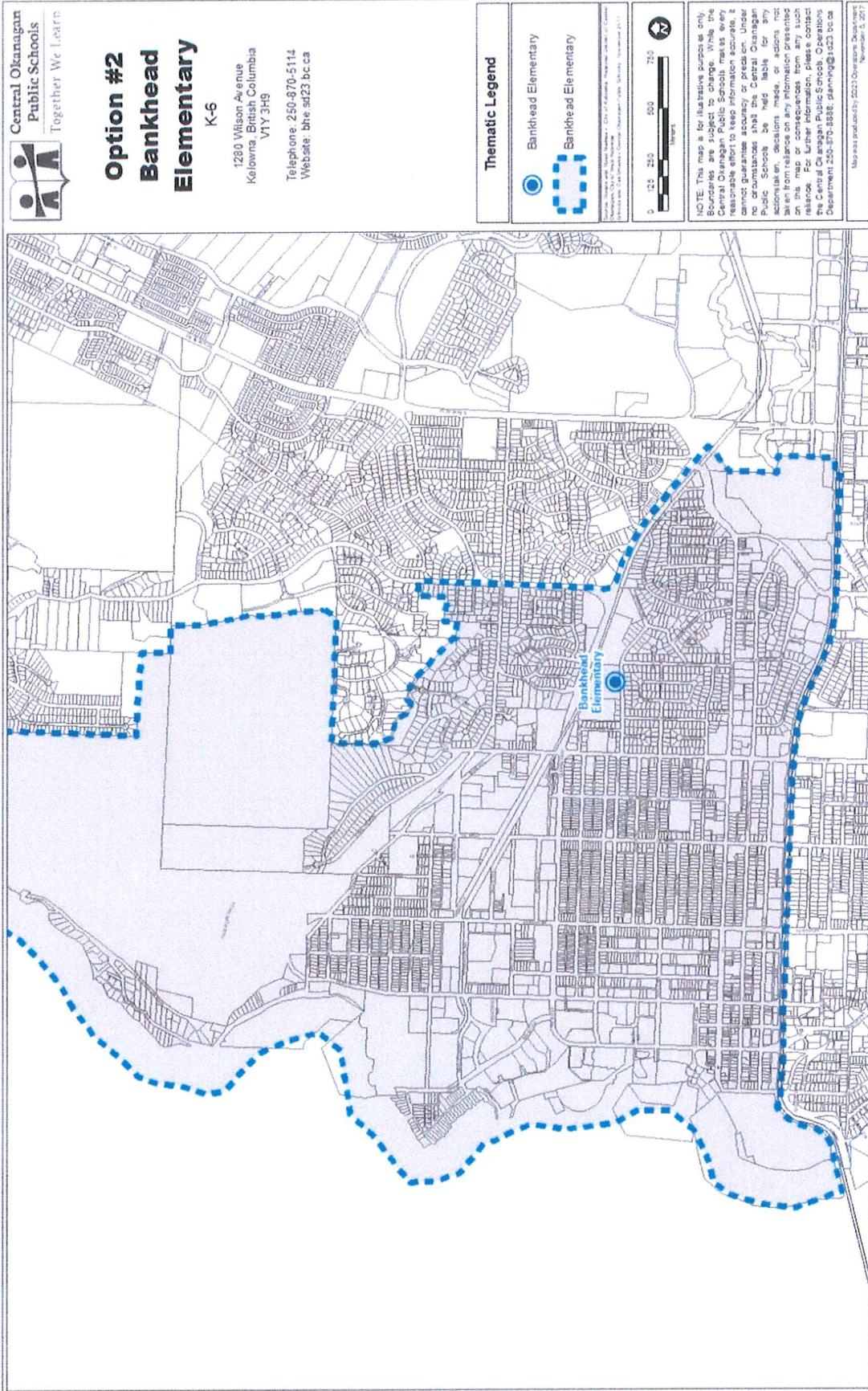
NOTE: This map is for illustrative purposes only. Boundaries are subject to change. While the Central Okanagan Public Schools makes every effort to ensure the accuracy of the information presented on this map, no circumstances shall the Central Okanagan Public Schools be held liable for any action taken in reliance on any information presented on this map or consequences from any such action. For more information, please contact the Central Okanagan Public Schools, Operations Department: 250-870-8888; planning@cs23.bc.ca

Map was produced by SD23 Operations, Dept. 044, November 5, 2017



Document Path: C:\Users\lshelton\Documents\Working\2018\BMS\GIS\Documents\Watson\Option 1 - VAT Catchment Map.sxd

Appendix E





Option #2 Watson Road Elementary K-6

475 Yates Road
Kelowna, British Columbia
V1V 1R3

Phone: (250) 870-5137
Website: wat.sd23.bc.ca

Thematic Legend

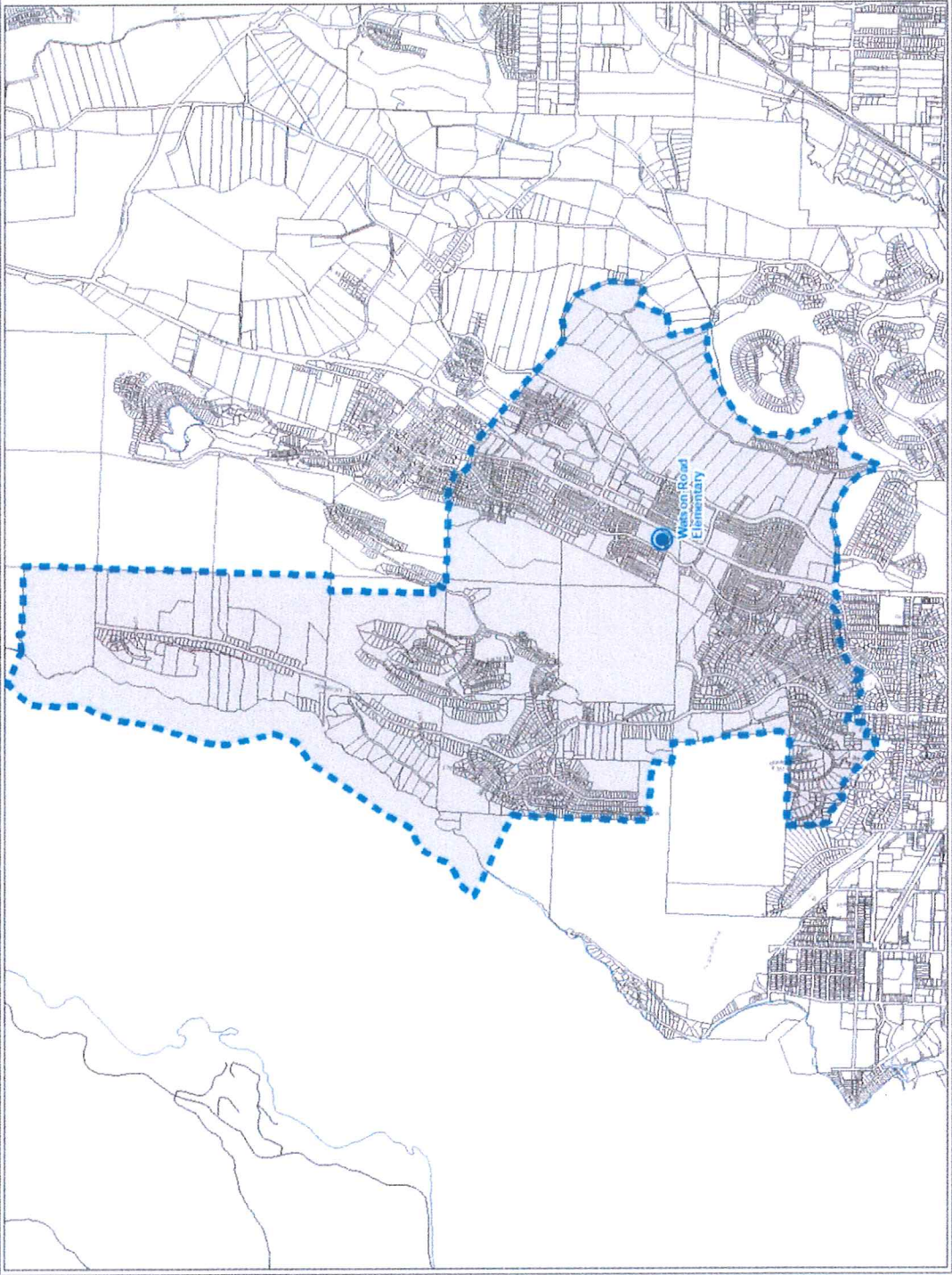
- Watson Road Elementary
- Watson Elementary

Source: Google Earth, 2013; City of Kelowna, 2013; BC Assessment, 2012
Map Date: 2013
Map Scale: 1:25,000
Map Projection: UTM, Zone 12N, Datum: NAD 83



NOTE: This map is for illustrative purposes only. Boundaries are subject to change. While the Central Okanagan Public Schools makes every reasonable effort to keep information accurate, it does not guarantee accuracy. Central Okanagan Public Schools will not be held liable for any action taken, decisions made, or actions not taken based on any information presented on this map or consequences from any such information. For more information, contact the Central Okanagan Public Schools Operations Department: 250-870-5133; planning@sc23.bc.ca

Map was produced by: 2013 Operations Department
Number: 5, 2013



Document Path: C:\Users\jsteele\Documents\Design_Drive\2013 Planning\K12\OS\Working\Map\2013-2018\2013-2018\111-CustomerService\Option 2 - BIC_CapExMap_Maps.mxd



Memorandum

Date: November 21, 2018
To: Planning and Facilities Committee
From: Eileen Sadlowski, Secretary-Treasurer/CFO
Prepared By: David Widdis, Planning Manager

Action Item: **Proposed Catchment Boundary for Black Mountain Elementary and Ellison Elementary Schools**

1.0 ISSUE STATEMENT

During the Board meeting regarding the transportation funding in September 2016, there was discussion regarding re-establishing the elementary boundaries in the Rutland area. Currently, this area has an open elementary catchment boundary. Direction from the Board was to hold off on establishing the Rutland proper area until there is a decision on the Rutland Middle School; however, the boundaries for Black Mountain and Ellison Elementary schools could move forward because they are distinct communities and the busing eligibility is based on having catchments.

2.0 RELEVANT BOARD MOTION/DIRECTION

Main Motion 18P-102 as Amended by 18P-103:

THAT: Staff proceed with a Catchment Area Review for Black Mountain Elementary and Ellison Elementary Schools.

CARRIED

3.0 BACKGROUND

The development of the Long Term Facility Plan recommended to establish catchment boundary's for Black Mountain Elementary and Ellison Elementary Schools for two reasons:

- 1) Provide certainty regarding transportation eligibility and
- 2) Manage student enrolment for Black Mountain Elementary due to the projected growth in the Black Mountain area

The Board of Education approved a catchment review for Black Mountain and Ellison Elementary schools in September 2018, to explore boundary options for the schools.

School District staff members have reviewed the demographics, future growth projections and School capacities, as well as attended Parent Advisory Council meetings at these schools to introduce the catchment area review and listen to parental input for consideration.

During the Parent Advisory Committee meetings Staff heard consistent messaging:

- Keeping neighbourhoods and peers together is important
- Keeping families together is important
- Ensuring the schools are sustainable for the long-term
- Provide transportation certainty for schools and families was understandable for the School District

Staff received some comments from Black Mountain Elementary School parents regarding the draft boundary along Lewis Road and Garner Road and consideration to exclude the Toovey Neighbourhood from a Black Mountain Elementary catchment boundary. The summary of the comments and responses are provided in Appendix D.

Staff have not received any correspondence from parents in Ellison Elementary School.

4.0 POINTS FOR CONSIDERATION

1. Creating catchment boundaries will help manage student enrolment in the schools
2. Transportation eligibility is consistent with policy and regulations
3. Current enrolment projections indicate Black Mountain Elementary will continue to exceed its capacity over the next ten years; enrolment projected to increase to 460 over the next ten years
4. Black Mountain Elementary School will require one or two portables to accommodate current projections
5. The historic kindergarten registrations for Black Mountain Elementary School have averaged about 70 students. The kindergarten projection for 2019 shows an increase over the average to 83. This increases the pressure on the school capacity; however, this is an anomaly and projections from 2020 forward, expects the kindergarten registrations to move back to the historic trend.
6. Black Mountain area continues to have higher migration rate of children moving into the area.
7. Toovey Heights Neighbourhood
 - a. Include Toovey Heights Neighbourhood with Black Mountain Elementary Catchment
 - Majority of families in the neighbourhood (27 students) currently attend Black Mountain Elementary School
 - Siblings of current students not yet registered will attend Black Mountain Elementary School to keep families together
 - The neighbourhood over the last four years has averaged about twenty students attending Black Mountain Elementary
 - The Rutland Area is an open catchment that allows families to choose which school to attend. In the Toovey Heights neighbourhood families have chosen Black Mountain Elementary school to register their children and have accepted the school being over capacity compared to other Rutland schools that are under capacity
 - b. Exclude Toovey Heights Neighbourhood from Black Mountain Elementary Catchment
 - Current students can remain at Black Mountain Elementary school

- Siblings of current students registering for September 2019 or later will be subject to the student placement policy 405. However, the Board may suspend this policy to accommodate siblings of current students.
- The exclusion of this area from Black Mountain Elementary may reduce the student projections for the school to the current enrolment levels. This would not occur immediately; however, over time the projections may decrease by removing the historical trend of number of students over time.
- There are other schools in Rutland area that have room in the schools for more students
- Enrolment projections for Black Mountain Elementary show a small decrease in enrolment by excluding this neighbourhood; however, the school will still require additional portables regardless of whether Toovey Heights students are included or excluded. Toovey Heights students could be accommodated in the short term without disruption.

5.0 OPTIONS FOR ACTION

1. Recommend that the Board of Education approve the catchment boundary changes as presented;
2. Provide additional or different direction

6.0 SECRETARY TREASURER'S COMMENTS

Establishing the catchments for Black Mountain and Ellison Elementary as presented will re-establish distinct catchments for each school and allow for appropriate boundaries to be utilized for transportation.

8.0 STAFF RECOMMENDATIONS

THAT: The Planning and Facilities Committee recommends to the Board:

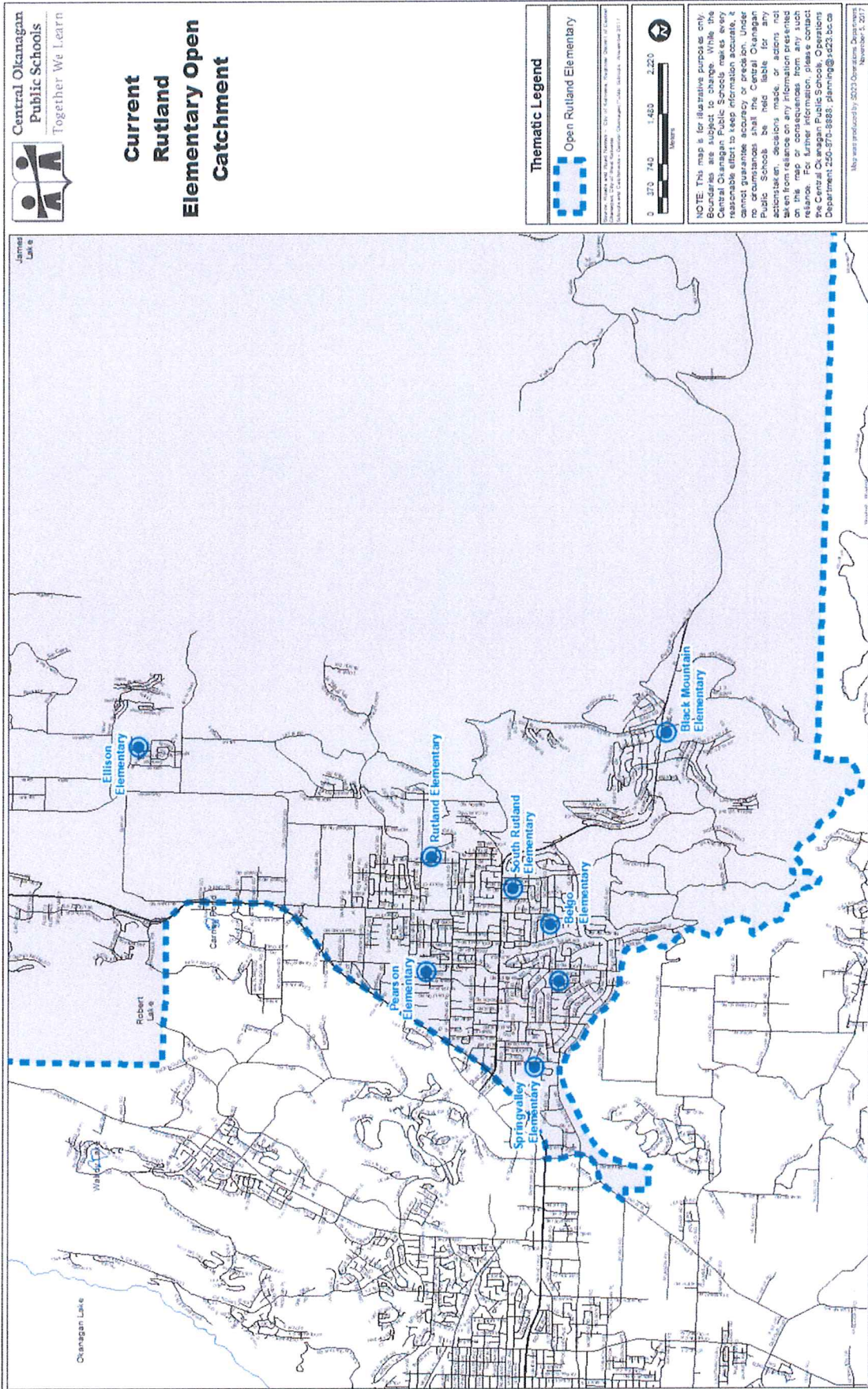
THAT: The Board of Education approve Option #1 (include Toovey Heights) for Black Mountain Elementary School catchment boundary as presented at the Planning and Facilities Committee on November 21, 2018

AND THAT The Board of Education approve Option #1 for Ellison Elementary School catchment boundary as presented at the Planning and Facilities Committee on November 21, 2018

9.0 APPENDICES

- A. Current Catchment Boundary for Rutland Elementary School
- B. Background Information and FAQ for Black Mountain Elementary-Ellison Elementary Catchment Review
- C. Rutland Area Enrolments and Projections
- D. Summary of Comments
- E. Option #1 Catchment Boundary for Rutland Elementary Schools
- F. Option #2 Catchment Boundary for Rutland Elementary Schools

Appendix A



Appendix B



Catchment Boundary Review

Black Mountain Elementary and Ellison Elementary Schools

School District staff presented to the Planning and Facilities (P&F) Committee, with recommendations, the process for review of Black Mountain Elementary and Ellison Elementary Catchment Areas, which is a recommendation of the Long-Term Facility Plan (LTFP). During a Board meeting regarding the transportation funding in September 2016, there was discussion regarding re-establishing the elementary boundaries in the Rutland area. Currently, the Rutland area has an open elementary catchment boundary. Direction from the Board was to hold off on establishing the Rutland proper area until there is a decision on the Rutland Middle School; however, the boundaries for Black Mountain and Ellison Elementary schools could move forward because they are distinct communities and the busing eligibility is based on having catchments.

A catchment review is to be a collaborative process to minimize disruptions to families, make the most effective use of existing facilities, provide certainty for transportation eligibility and create sustainable enrolment levels in these elementary schools. The (P&F) Committee recommended that the Board of Education proceed with the Catchment review for Black Mountain Elementary and Ellison Elementary Schools.

The LTFP contains a series of overarching recommendations for all schools and catchment areas that provide a comprehensive plan outlining how the district will manage its school facilities in order to deliver its educational programs at the highest possible standard. SD23 have undertaken and completed several of the recommendations from the LTFP and this review is recommended in the section for the Rutland Area.

SD23 has established policies (Policy 405 and 405R) for setting/changing catchment areas. The following are the principles to follow for catchment review:

- reflect traditional neighbourhoods, subdivisions and regions;
- minimize safety concerns for elementary students as a result of major roadways or other known hazards;
- reflect long-term development to minimize stress caused by frequently changing boundaries in rapidly growing/declining areas;
- maximize the efficiency of schools and the transportation system;
- maintain a cohort of students at each grade level offered at the school, to support the long-term sustainability of the school.

The timeline for this catchment review started in September with the development of some options for this area. Presentations were made at Parent Advisory Committee meetings and the staff are expecting to provide a recommendation to the Board in November/December. Any changes to the catchment boundaries, if approved by the Board, will be implemented for September 2019.

The attachments are the current catchment boundaries and draft options for discussion purposes.

If you have any questions, please contact David Widdis, Planning Manager at 250-470-3276

Frequently Asked Questions

1. *What types of changes can be proposed?*

The types of changes that could be proposed include:

- changes to school boundaries (the catchment area for a school could change)

2. *What are the issues in my community?*

- Transportation eligibility – In an open catchment area, it can be unclear regarding the eligibility of students without defined boundary lines.
- Student management – Black Mountain Elementary School is over capacity and the 10 year projection indicates increased enrolment. The establishment of a catchment boundary will establish student placement eligibility using Policy 405.

3. *When will these changes come into effect?*

The proposed recommendation would come forward to the Planning and Facilities Committee meeting in November/December and moved forward to a public Board of Trustees meeting. If approved by the Board, the implementation for any change would be for September 2019.

4. *What will come forward to the Planning and Facilities Committee for review?*

The way the catchment boundary review process works, staff must develop a proposed plan detailing changes affecting schools in the review area. At this time, it is a proposed plan for change. That proposal is subject to consultation. After the consultation process, staff will make recommendations to the Planning and Facilities Committee and the committee will vote on those recommendations. The recommendations of the committee then go to Board for final approval.

5. *What will happen to students if these changes are made?*

The impact on students depends on the proposed change at the school. Every effort has been made to keep student cohorts together.

6. *How can parents and guardians get involved?*

Parents, guardians, students and community members will have an opportunity to learn more about the recommended plan and to provide feedback in the fall. This will occur in several ways, including:

- Attending a Parent Advisory Committee meeting;
- Provide written input to Planning.Review@sd23.bc.ca
- Attending a Planning and Facilities Committee or Board meeting.

7. *What students will have to move from one school to another? Can all existing students remain in their current school?*

Students who are in Black Mountain or Ellison this current year will continue to stay in the school until they move to middle school. If the catchment boundary is approved for September 2019, any new students applying to the school will be placed in priority based on Policy 405.

8. *Will siblings have to attend different schools?*

The Board of Education policy places a high priority on keeping siblings together, and the intent is to allow siblings to stay together if that is what families decide to do. Any changes that are recommended are to

cause the least disruption to families in the area. Here are two examples of unique circumstances, which demonstrate how siblings could stay together:

- **Scenario 1:** Both siblings attend Black Mountain or Ellison Elementary School but are now in catchment for Black Mountain Elementary or Ellison Elementary School. The students are able to stay in the school until they are able to move to the middle school.
- **Scenario 2:** One sibling attends Black Mountain Elementary or Ellison Elementary School and a younger sibling is not currently attending a school. This situation is reviewed on a case by case basis. In previous catchment reviews, the Board has suspended policy to allow the younger sibling to attend the same school as the older sibling.

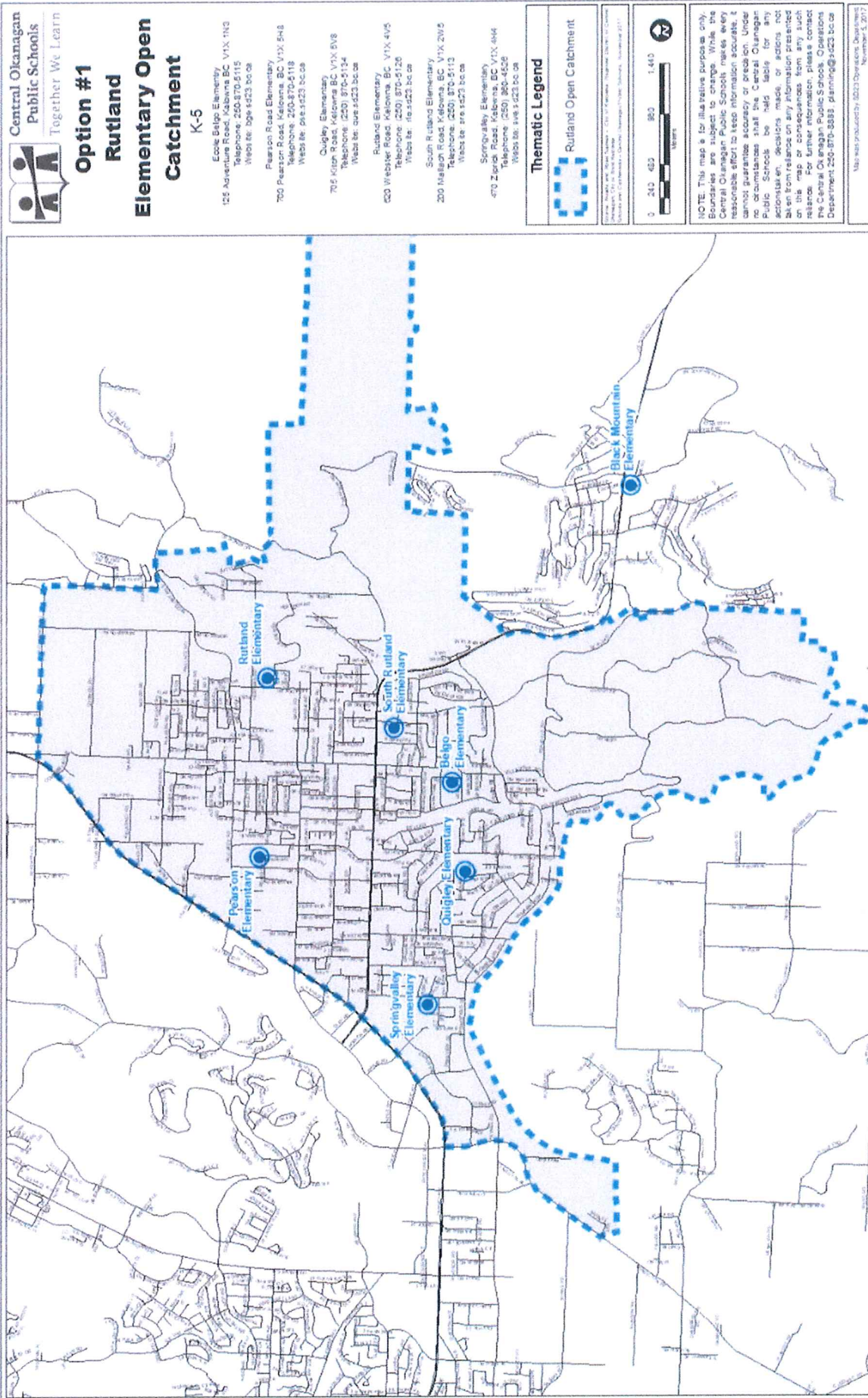
Appendix C

RUTLAND FAMILY PROJECTIONS: SD23 PROJECTIONS														
Updated October 8, 2018		Enrolment			Projections									
School	Nom Cap	2016	2017	2018	2019	2020	2021	2022	2023	2024	2025	2026	2027	2028
		K-5	K-5	K-5	K-5	K-5	K-5	K-5	K-5	K-5	K-5	K-5	K-5	K-5
Belgo	340	326	341	345	348	355	355	349	356	359	363	364	362	362
Black Mountain	390	408	425	438	461	458	462	466	464	465	458	461	461	461
Ellison	270	183	194	195	188	204	214	219	234	225	234	229	233	234
Pearson	485	237	235	220	218	218	227	227	231	231	231	231	234	234
Quigley	490	258	264	257	249	230	233	232	233	231	229	228	231	232
Rutland	390	422	423	421	404	400	391	390	392	394	394	392	392	392
South Rutland	295	193	184	183	175	160	154	160	158	151	155	158	159	160
Springvalley	345	256	264	272	269	264	255	253	271	266	258	265	265	265
		6-8	6-8	6-8	6-8	6-8	6-8	6-8	6-8	6-8	6-8	6-8	6-8	6-8
Rutland Middle	425	537	539	558	572	574	543	509	481	508	523	537	516	510
Springvalley Middle	550	434	440	463	493	562	583	579	543	553	543	567	559	569
		9-12	9-12	9-12	9-12	9-12	9-12	9-12	9-12	9-12	9-12	9-12	9-12	9-12
Rutland Secondary	1,550	1,461	1,389	1,358	1,384	1,360	1,399	1,482	1,519	1,560	1,554	1,480	1,481	1,491

RUTLAND FAMILY PROJECTIONS: SD23 PROJECTIONS - Exclude Toovey Heights Neighbourhood														
Updated October 8, 2018		Enrolment			Projections									
School	Nom Cap	2016	2017	2018	2019	2020	2021	2022	2023	2024	2025	2026	2027	2028
		K-5	K-5	K-5	K-5	K-5	K-5	K-5	K-5	K-5	K-5	K-5	K-5	K-5
Belgo	340	326	341	345	348	355	355	349	356	359	363	364	362	362
Black Mountain	390	408	425	438	453	450	454	457	455	457	458	461	461	461
Ellison	270	183	194	195	188	204	214	219	234	225	234	229	233	234
Pearson	485	237	235	220	218	218	227	227	231	231	231	231	234	234
Quigley	490	258	264	257	249	230	233	232	233	231	229	228	231	232
Rutland	390	422	423	421	404	400	391	390	392	394	394	392	392	392
South Rutland	295	193	184	183	183	168	162	167	164	156	155	158	159	160
Springvalley	345	256	264	272	269	264	255	253	271	266	258	265	265	265
		6-8	6-8	6-8	6-8	6-8	6-8	6-8	6-8	6-8	6-8	6-8	6-8	6-8
Rutland Middle	425	537	539	558	572	574	543	510	484	511	526	538	516	510
Springvalley Middle	550	434	440	463	493	562	583	580	544	553	542	565	559	569
		9-12	9-12	9-12	9-12	9-12	9-12	9-12	9-12	9-12	9-12	9-12	9-12	9-12
Rutland Secondary	1,550	1,461	1,389	1,358	1,384	1,360	1,399	1,482	1,519	1,560	1,556	1,484	1,484	1,494

Appendix D
Summary of Comments Received

	Comment	Response	Action
1.	Should boundary for Black Mountain include the area of Charleswood Dr and Belgo Rd?	A review of September 2017 enrolment showed there was one student in the area attending Black Mountain Elementary. A review of the September 2018 enrolment shows four students attending Black Mountain and three students are in the Charleswood Dr area that is outside the draft boundary for the school.	Staff amended the draft boundary to include Lewis Road and Garner Rd as well as Charleswood Drive as shown in the recommended option
2.	Could Toovey Neighbourhood remain in Rutland Open Catchment?	As of September 30, 2018 there were 36 elementary students in the Toovey Neighbourhood attending SD23 schools. 27 students are attending Black Mountain Elementary, 4 attending Quigley, 2 attending Rutland Elem, 2 attending Springvalley Elem and 1 attending South Rutland Elem.	Staff recommend for Toovey neighbourhood to remain in the proposed catchment of Black Mountain Elementary



**Option #1
Rutland
Elementary Open
Catchment**

K-5

Ecole Belgo Elementary
125 Adventure Road, Kelowna BC V1X 1N3
Telephone: 250.870.5115
Web site: b9e-1523.bc.ca

Pearson Road Elementary
700 Pearson Road, Kelowna BC V1X 5H4
Telephone: 250.870.5115
Web site: p9c-1523.bc.ca

Quigley Elementary
705 Kitchin Road, Kelowna BC V1X 8V8
Telephone: (250) 870-5134
Web site: qu-1523.bc.ca

Rutland Elementary
420 Westhill Road, Kelowna BC V1X 4V5
Telephone: (250) 870-5126
Web site: r15-1523.bc.ca

South Rutland Elementary
200 Mallison Road, Kelowna BC V1X 2W5
Telephone: (250) 870-5113
Web site: sr-1523.bc.ca

Spring Valley Elementary
470 Zurch Road, Kelowna BC V1X 4H4
Telephone: (250) 860-4526
Web site: sv-1523.bc.ca

Thematic Legend



Rutland Open Catchment

Scale: 0, 240, 480, 960, 1,440 Meters



NOTE: This map is for illustrative purposes only. Boundaries are subject to change. While the Central Okanagan Public Schools makes every reasonable effort to keep information accurate, it cannot guarantee accuracy or precision. Under no circumstances shall the Central Okanagan Public Schools be held liable for any action taken, decisions made, or actions not taken from reliance on any information presented hereon. For further information, please contact the Central Okanagan Public Schools, Operations Department 250-870-8883, planning@1523.bc.ca

Map was produced by: 2023 Operations Department
November 5, 2017



Option #1
Include Toovey Heights
Black Mountain Elementary Catchment

K-5

1650 Gallagher Road
 Kelowna, British Columbia
 V1P 1G7
 Telephone: 250-870-5115
 Website: bmes.sds.bc.ca

Thematic Legend

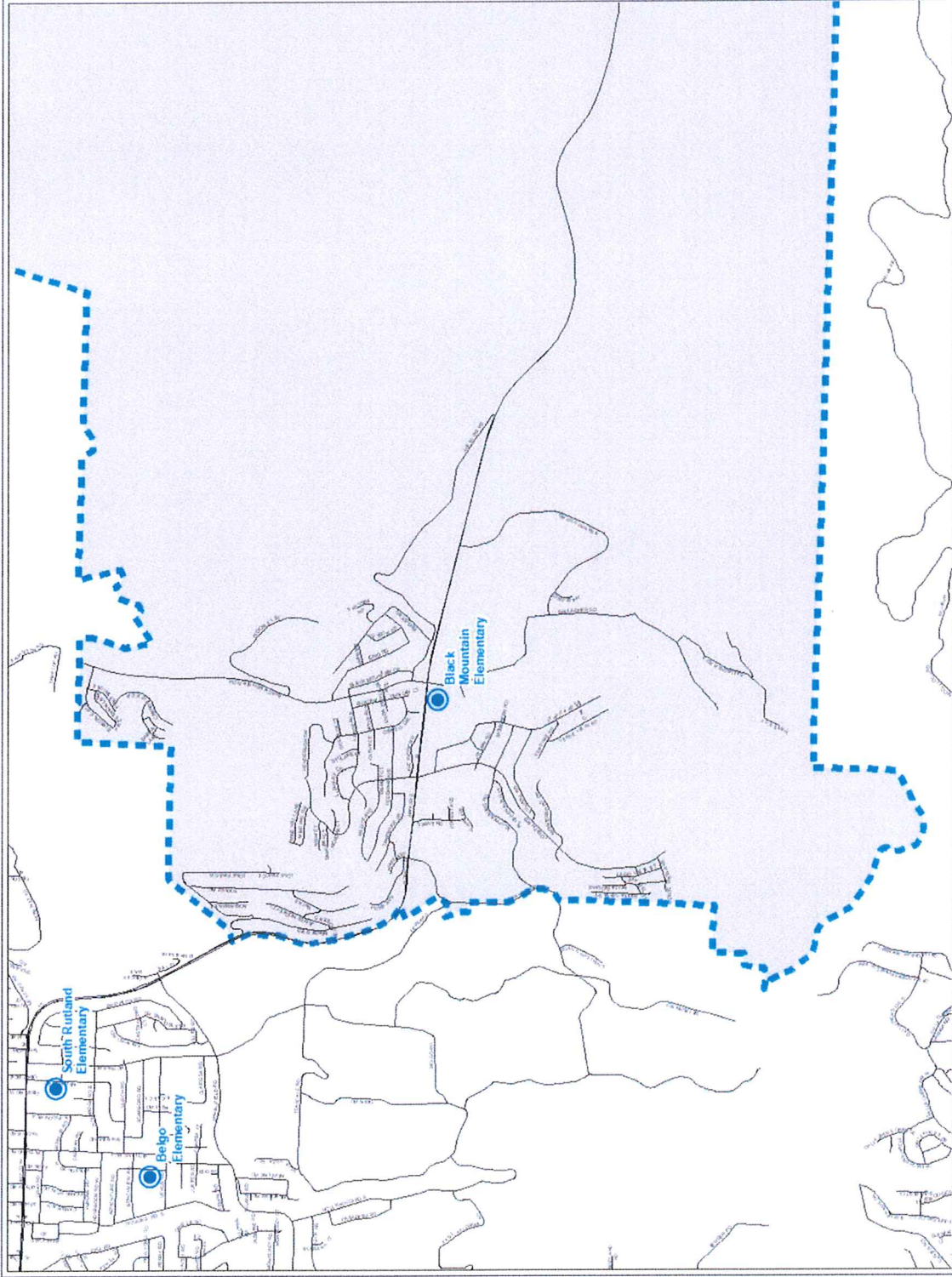
Black Mountain Elementary

0 155 330 660 990

Meters

NOTE: This map is for illustrative purposes only. Boundaries are subject to change. While the Central Okanagan Public Schools makes every reasonable effort to keep information accurate, it cannot guarantee accuracy or precision. Under no circumstances shall Central Okanagan Public Schools be held liable for any action taken, decisions made, or actions not taken from reliance on any information presented on this map or consequences from any such reliance. For further information, please contact the Central Okanagan Public Schools, Operations Department 250-870-5856; planning@co23.bc.ca

Map was produced by 2023 Operations Department
 November 6, 2017

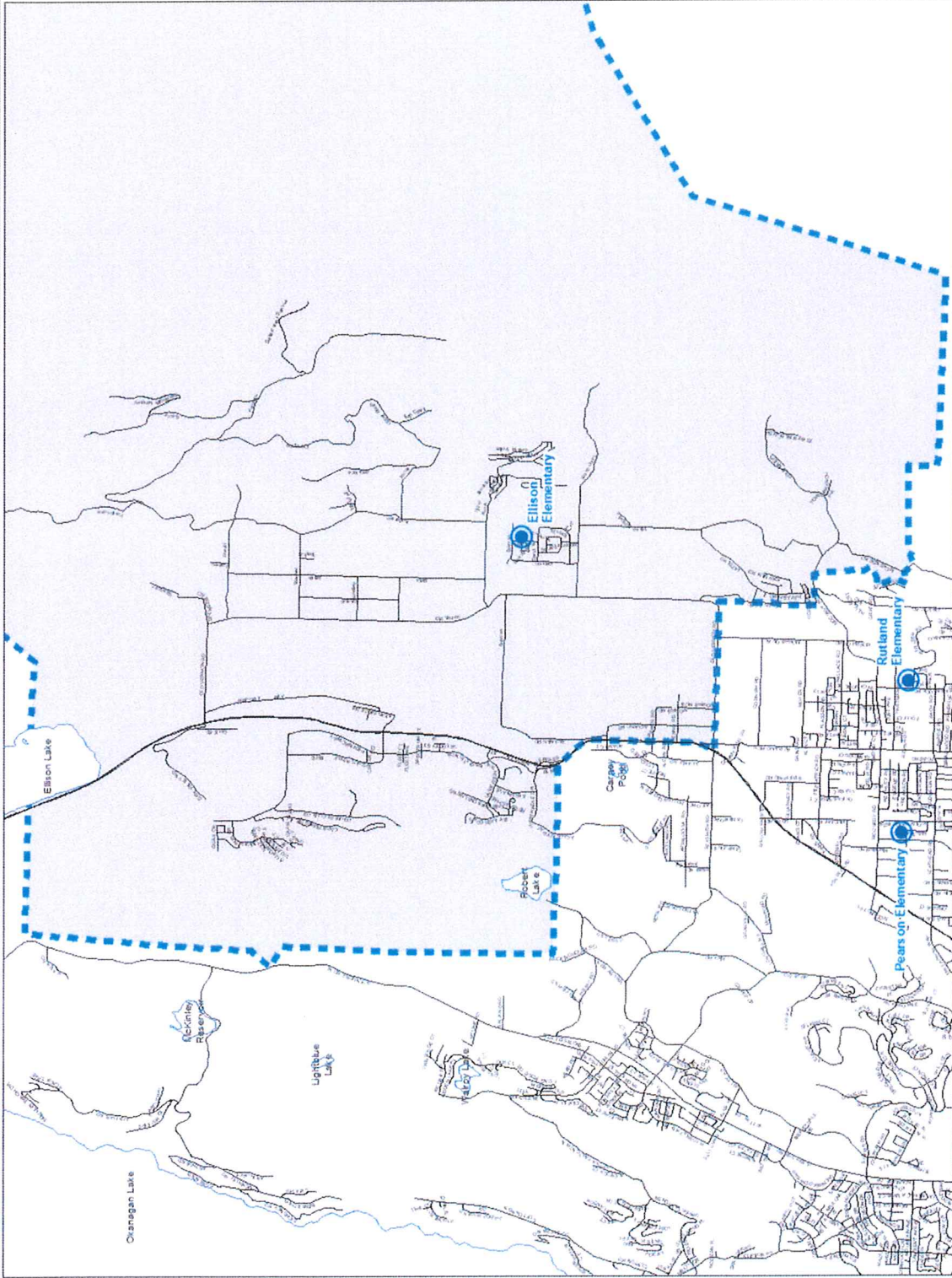




Option #1 Ellison Elementary Catchment K-5

3735 Parkdale Road
Kelowna, British Columbia
V1X 6K9

Phone: (250) 870-6140
Web: 88.483.823.bc.ca



Thematic Legend

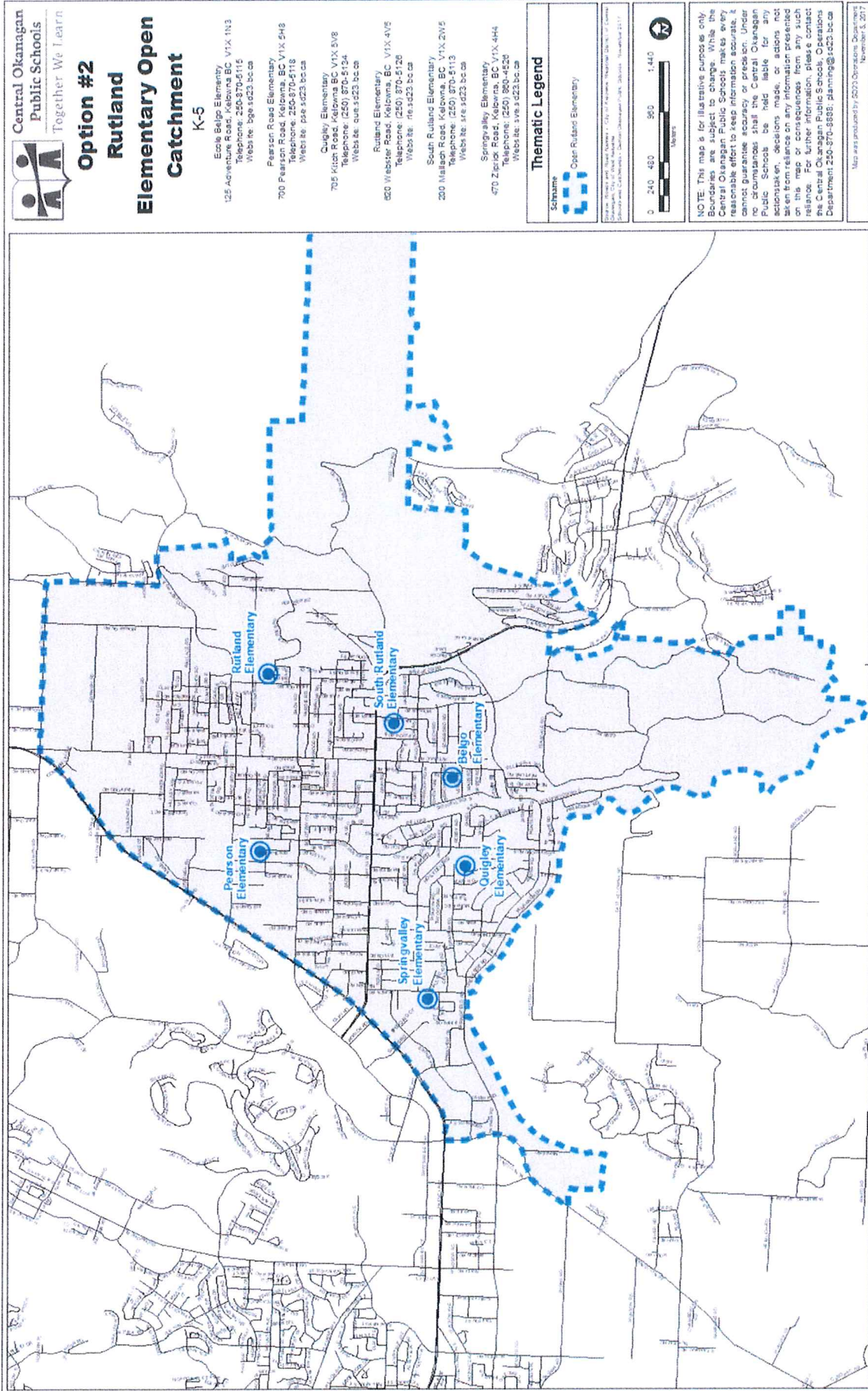


Schools
Ellison Elementary



NOTE: This map is for illustrative purposes only. Boundaries are subject to change. While the Central Okanagan Public Schools makes every reasonable effort to keep information accurate, it cannot guarantee accuracy or precision. Under no circumstances shall the Central Okanagan Public Schools be held liable for any action taken, decisions made, or actions not taken in reliance on any information presented on this map. For further information, please contact the Central Okanagan Public Schools, Operations Department 250-870-9888; planning@1023.bc.ca

Map was produced by 1023 Open Source Design
November 1, 2017



**Option #2
Rutland
Elementary Open
Catchment
K-5**

- East Baljo Elementary**
125 Adventure Road, Kelowna BC V1X 1N3
Telephone: 250-870-5115
Website: bjo.eoc23.bc.ca
- Pearson Road Elementary**
790 Pearson Road, Kelowna, BC V1X 5H8
Telephone: 250-870-5118
Website: pr.eoc23.bc.ca
- Quigley Elementary**
705 Kitch Road, Kelowna BC V1X 5V8
Telephone: (250) 870-5134
Website: que.eoc23.bc.ca
- Rutland Elementary**
820 Webster Road, Kelowna BC V1X 4V5
Telephone: (250) 870-5120
Website: rie.eoc23.bc.ca
- South Rutland Elementary**
200 Neilson Road, Kelowna, BC V1X 2W5
Telephone: (250) 870-5113
Website: sre.eoc23.bc.ca
- Spring Valley Elementary**
470 Zepher Road, Kelowna, BC V1X 4H4
Telephone: (250) 800-4520
Website: sre.eoc23.bc.ca

Thematic Legend

	Open Rutland Elementary
--	-------------------------

© 2017 Okanagan Public Schools
City of Kelowna
Map Date: 2017



NOTE: This map is for illustrative purposes only. Boundaries are subject to change. While the Central Okanagan Public Schools makes every reasonable effort to keep information accurate, it cannot guarantee accuracy or precision. Under no circumstances shall the Central Okanagan Public Schools be held liable for any action taken, decisions made, or actions not taken from reliance on any information presented on this map or consequences from any such reliance. For further information, please contact the Central Okanagan Public Schools, Operations Department 250-870-5888; planning@oc23.bc.ca

Map was produced by 5075 Okanagan Public Schools
November 3, 2017

**Option #2
Black Mountain
Elementary
Catchment**
K-5

1650 Gallagher Road
Kelowna, British Columbia
V1P 1G7
Telephone: 250-870-6115
Web site: smes2.cds.bc.ca

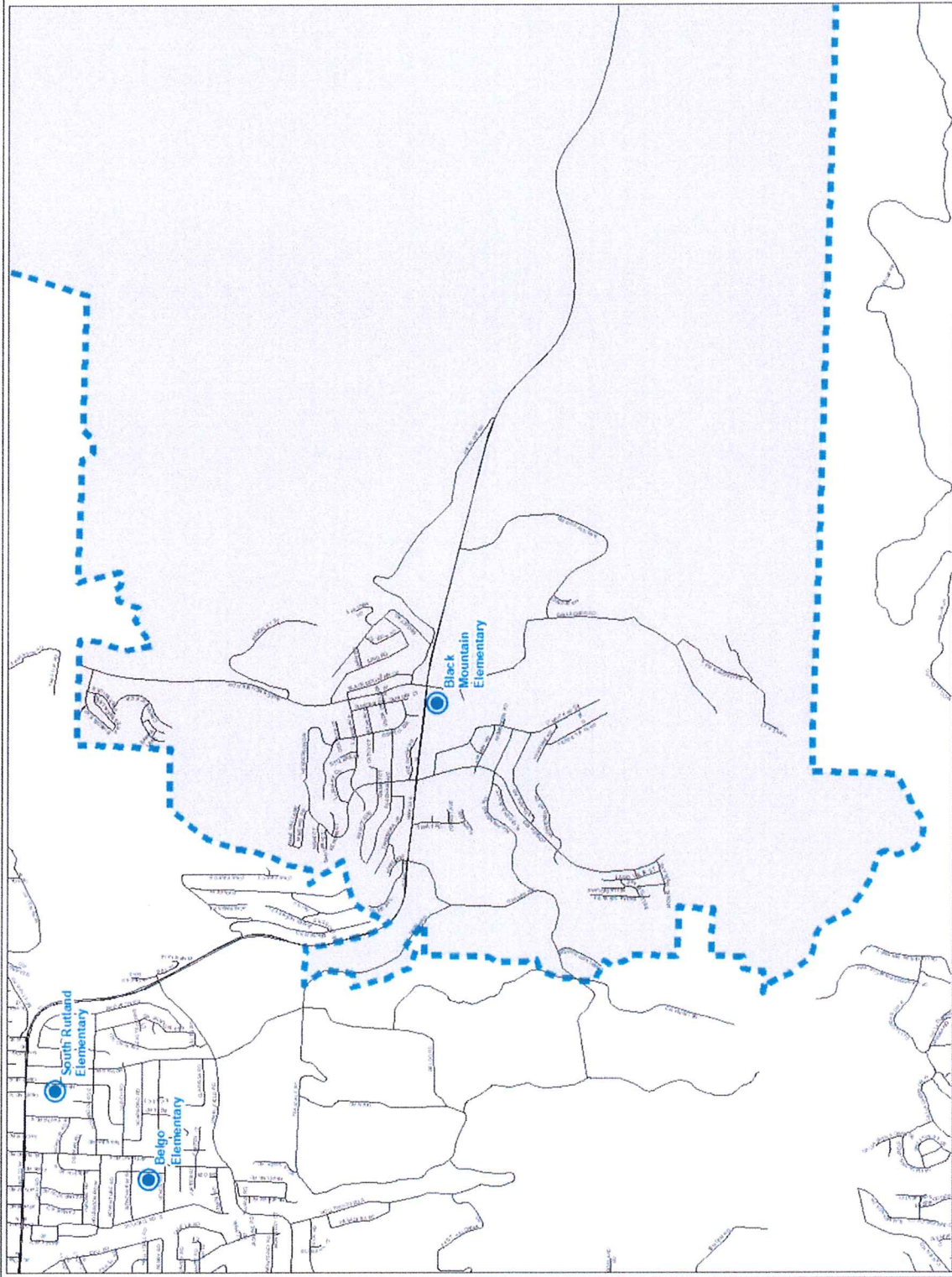
Thematic Legend

Schools
Black Mountain Elementary

0 165 330 500 800
Meters

NOTE: This map is for illustrative purposes only. Boundaries are subject to change. While the Central Okanagan Public Schools makes every reasonable effort to keep information accurate, it cannot guarantee accuracy or precision. Under no circumstances shall the Central Okanagan Public Schools be held liable for any action taken, decisions made, or actions not taken, in reliance on the information contained on this map or consequences from any such reliance. For further information, please contact the Central Okanagan Public Schools, Operations Department 250-870-6388; planning@cds2.bc.ca

Map was produced by CDS2 Operations Department
November 8, 2017





**Option #2
Ellison
Elementary
Catchment
K-5**

3735 Parkdale Road
Kelowna, British Columbia
V1Y 6N5

Phone: (250) 870-5140
Website: es.sds.bc.ca

Thematic Legend

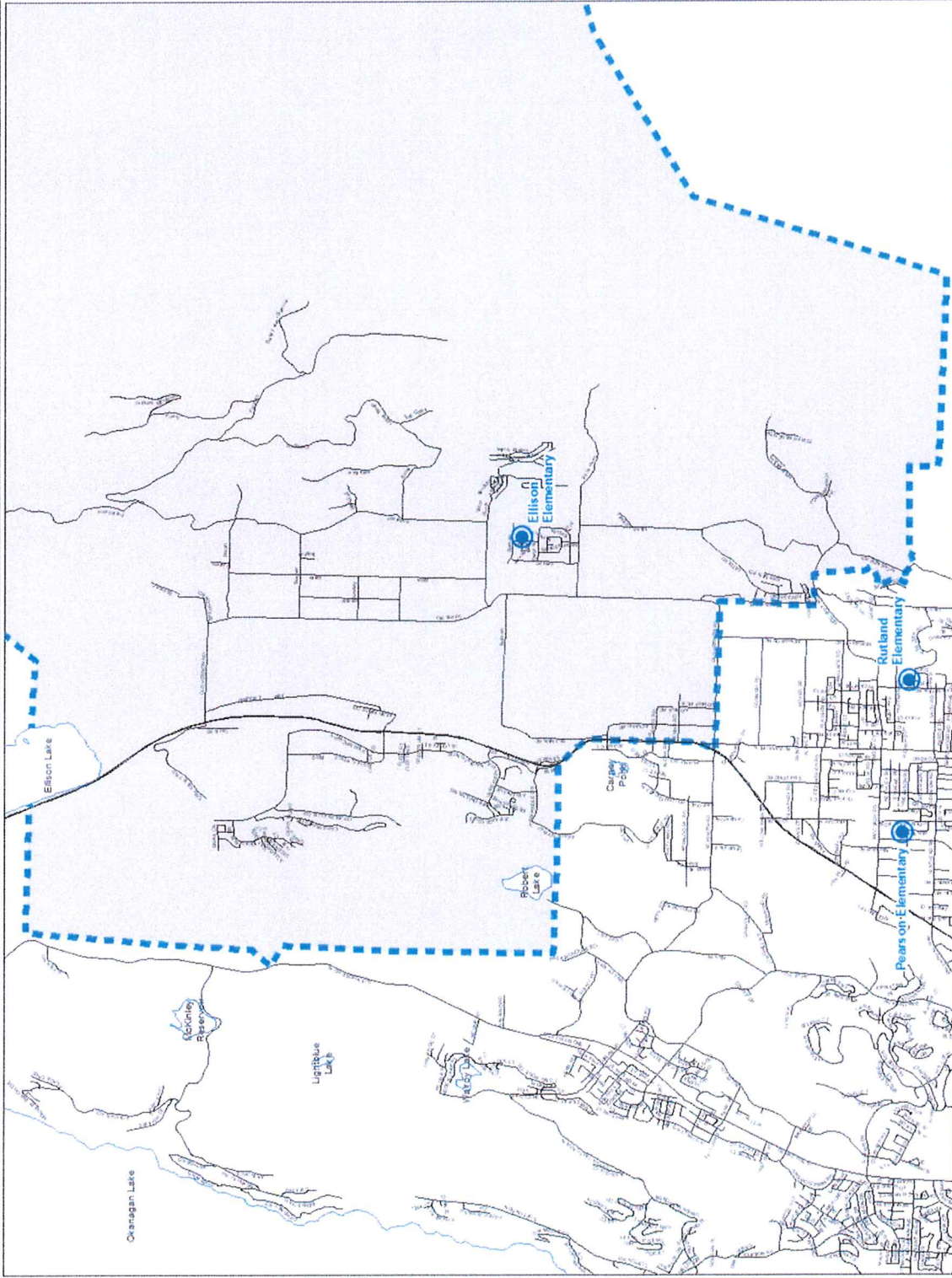


Schools
Ellison Elementary



NOTE: This map is for illustrative purposes only. Boundaries are subject to change. While the Central Okanagan Public Schools makes every reasonable effort to keep information accurate, it cannot guarantee accuracy or precision. Under no circumstances shall the Central Okanagan Public Schools be held liable for any actions taken, decisions made, or actions not taken in reliance on any information presented herein. For further information, please contact the Central Okanagan Public Schools, Operations Department 250-870-5888; planning@j.sds.bc.ca

Map was produced by SDS Operations Department
November 5, 2017





Memorandum

Date: November 21, 2018
To: Planning and Facilities Committee
From: Eileen Sadlowski, Secretary-Treasurer/CFO
Prepared By: David Widdis, Planning Manager

Information Item: **School District Portable Information**

1.0 RELEVANT BOARD MOTION/DIRECTION

None

2.0 BACKGROUND

The District continues to use portables for the student management at school facilities. This past summer, the District bought seven portables and moved five portables due to the increasing enrolment and the implementation of the new grade configuration on the Westside. Attached is an updated portable report based on the changes this summer.

3.0 INFORMATION STATEMENT

The District annually reviews its portable inventory and needs based on current enrolments and projections. The attached information sheet provides some generally asked questions regarding portables and an inventory of portables throughout the District.

4.0 SECRETARY TREASURER'S COMMENTS

Planning for portables is an ongoing process. A number of factors may change the initial placement plan. Movement and installation traditionally occurs between May and August in order for them to be ready in September.

5.0 APPENDIX

A. Portable Inventory

**Appendix A
Portable Inventory**

WESTSIDE FAMILY PROJECTIONS: SD23 PROJECTIONS								
School	Enrolment	Projections				Projected	Actual	
	2017	2018	Fixed Classrooms	Modular Classrooms	2017-2018 Portable Classrooms	Portable Moves for 2018	Portable Moves for 2018	2018-2019 Portable Classrooms
	<u>K-6</u>	<u>K-5</u>						
Chief Tomat Elementary	293	265	12		1	-1	0	1
George Pringle Elementary	489	442	20	2	0			0
Glenrosa Elementary	233	196	14	1	0			0
Helen Gorman Elementary	250	221	12		0			0
Hudson Road Elementary	283	230	13		2	-2	-1	1
Mar Jok Elementary	477	405	19		0			0
Peachland Elementary	196	178	13	1	0			0
Rose Valley Elementary	386	331	14		3	-3	-2	1
Shannon Lake Elementary	414	373	17		2	-2	-2	0
	<u>7-9</u>	<u>6-8</u>						
Constable Neil Bruce Middle	725	817	30		0	2	2	2
	<u>7-9</u>	<u>6-9</u>						
Glenrosa Middle	463	603	30		0			0
	<u>10-12</u>	<u>9-12</u>						
Mt. Boucherie Secondary	1147	1417	53		4	3	3	7
			247	4	12	-3	0	12

OK MISSION FAMILY PROJECTIONS: SD23 PROJECTIONS								
School	Enrolment	Projections				Projected	Actual	
	2017	2018	Fixed Classrooms	Modular Classrooms	Current Portables	Portable Moves for 2018	Portable Moves for 2018	2018-2019 Portable Classrooms
	<u>K-6</u>	<u>K-6</u>						
Anne McClymont Elementary	581	568	16		8			8
Chute Lake Elementary	486	486	16	2	1			1
Dorothea Walker Elementary	497	507	16	1	4		1	5
	<u>7-9</u>	<u>7-9</u>						
Canyon Falls Middle	0	0			0			0
	<u>7-12</u>	<u>7-12</u>						
OK Mission Secondary	1359	1432	42		15			15
			90	3	28	0	1	29

LAKE COUNTRY FAMILY PROJECTIONS: SD23 PROJECTIONS								
School	Enrolment	Projections				Projected	Actual	
	2017	2018	Fixed Classrooms	Modular Classrooms	Current Portables	Portable Moves for 2018	Portable Moves for 2018	2018-2019 Portable Classrooms
	<u>K-6</u>	<u>K-6</u>						
Davidson Road Elementary	476	498	17		0			0
Oyama Traditional School	165	166	6		1			1
Peter Greer Elementary	451	461	18	1	2			2
	<u>7-12</u>	<u>7-12</u>						
George Elliot Secondary	842	859	28		7			7
			69	1	10	0	0	10

CENTRAL KELOWNA FAMILY PROJECTIONS: SD23 PROJECTIONS								
School	Enrolment 2017	Projections 2018				Projected	Actual	2018-2019 Portable Classrooms
			Fixed Classrooms	Modular Classrooms	Current Portables	Portable Moves for 2018	Portable Moves for 2018	
		<u>K-6</u>						
Bankhead Elementary	286	309	17		0			0
Glenmore Elementary	634	642	21		5	1	1	6
North Glenmore Elementary	505	560	19	2	0	3	3	3
Watson Elementary	562	568	20	2	1			1
A.S. Matheson	264	280	15		0			0
Casorso	543	534	18	1	5			5
Raymer	244	251	16	1	0			0
South Kelowna	229	239	12		0			0
		<u>7-9</u>						
Dr. Knox Middle	768	816	32		2	2	3	5
KLO Middle	826	788	28		7			7
		<u>10-12</u>						
Kelowna Secondary	1658	1656	64		8			8
			262	6	28	6	7	35

RUTLAND FAMILY PROJECTIONS: SD23 PROJECTIONS								
School	Enrolment 2017	Projections 2018				Projected	Actual	2018-2019 Portable Classrooms
			Fixed Classrooms	Modular Classrooms	Current Portables	Portable Moves for 2018	Portable Moves for 2018	
		<u>K-5</u>						
Belgo	341	342	14		0			0
Black Mountain	426	436	16		1	1		1
Ellison	195	201	11		0			0
Pearson	232	229	20	1	0			0
Quigley	261	250	20		0			0
Rutland	424	416	16		2			2
South Rutland	182	179	13		0			0
Springvalley	266	263	14		1			1
		<u>6-8</u>						
Rutland Middle	538	563	17		10			10
Springvalley Middle	442	484	22		2			2
		<u>9-12</u>						
Rutland Secondary	1397	1347	62		0			0
			225	1	16	1	0	16
						Projected	Actual	
			Fixed Classrooms	Modular Classrooms	Current Portables	Portable Moves for 2018	Portable Moves for 2018	2018-2019 Portable Classrooms
SD23 Totals			893	15	94	4	8	102

Portable Costing 2018-2019

Status Quo with no Reconfiguration	Westside	Other	Total	
Need	8	9	17	2 from inventory, purchase of 15 new
Available	0	-2	-2	
Net Needed	8	7	15	
Avg Cost /Portable	\$ 190,000	\$ 190,000		
	\$ 1,520,000	\$ 1,330,000	\$ 2,850,000	Original Projected Costs with No Reconfiguration

Estimate with Reconfiguration	Westside	Other	Total	
Need	5	9	14	2 from inventory, 8 recovered from westside elem, purchase of 4 new
Available	-3	-7	-10	
Net Needed	2	2	4	
	\$ 190,000	\$ 190,000		
	\$ 380,000	\$ 380,000		
Other Portable relocation Costs	\$ 240,000			
	\$ 620,000	\$ 380,000	\$ 1,000,000	Projected Costs with Westside Reconfiguration

Actual after Reconfiguration	Westside	Other	Total	
Need	5	8	13	1 from inventory, 5 recovered from westside elem, purchase of 7 new
Available	-5	-1	-6	
Net Needed	0	7	7	
Portable Purchases		\$ 744,825	\$ 744,825	
Relocation Costs		\$ 442,504	\$ 442,504	
			\$ 1,187,329	Actual Costs

The District was able to leave 3 portables at Westside Elementaries (Chief Tomat, Hudson Road and Rose Valley) originally scheduled for removal. This will allow for increased space to address enrolment or composition issues.

The additional actual costs of retaining these 3 portables on site and purchasing new was \$ 187,329



Memorandum

Date: November 21, 2018
To: Board of Education
From: Eileen Sadlowski, Secretary-Treasurer/CFO

Information: Rutland Middle School Project - Update

1.0 ISSUE STATEMENT

The replacement of Rutland Middle School has been a long standing project included in the School District's Capital Plan.

A review of the process and School District submissions has been provided as an update of progress to date.

2.0 RELEVANT BOARD MOTION/DIRECTION

Main 17P-104 (September 27, 2017 Board Meeting)

THAT: The Board of Education approves that the Rutland Junior Middle School Project Definition Report for a 700 student capacity middle school, for the amount of \$35,903,140 be submitted to the Ministry of Education.

Main 15P-146 (September 23, 2015 Public Board Meeting)

THAT: The 2015 Rutland Middle School Project Identification Report be submitted to the Ministry of Education;

AND THAT: The 2015/2016 Capital Plan submission include a request for a school renovation for Rutland Middle School:

- **Using Option 6: Repurposing Quigley Elementary School into a middle school**
- **With a capacity of 650 students**
- **With a total project budget, including reserves, of \$18,768,59.**

Main 15P-013 (January 28, 2015 Public Board Meeting)

THAT: The Board of Education approve the Superintendent's recommendation to implement the grade configuration change to Rutland area schools as per Board Motion 12P-089 for September 2015. (This will result in elementary schools being Kindergarten to grade 5, middle schools being grades 6 to 8, and secondary schools being grades 9 to 12.)

Resolution No. 09P-103

THAT: The Board of Education of School District No. 23 (Central Okanagan) approve the 2009/2010 Five Year Capital Plan as provided and as presented at the May 13, 2009 Public Board Meeting.

Resolution No. 09C-119

THAT: The Board of Education authorize staff to explore the potential to rebuild Rutland Middle School at 180 and 190 Rutland Rd as one of the possible options.

3.0 BACKGROUND

- Rutland Middle School was contrasted in 1948 and has undergone five major additions. The school has been in need of replacement for a number of years and has continually been a District Priority.
- The original Project Identification Report (PIR) was prepared and submitted in 2009 for the replacement of Rutland Middle School on a new site; however, any land large enough in the Rutland area is with the Agricultural Land Reserve.
- A subsequent update to the PIR was completed in 2012 that recommended a partnership with the Centennial Park Society . After further discussions this option was determined to not be viable.
- Another update to the PIR was completed in October 2013. This report recommended the construction of a new 600 student junior middle school on the existing RMS/RSS site, at a cost of \$24,221,923.
- Following discussions regarding the October 2013 PIR the District was requested to consider other options for Rutland Middle School and consider reducing the costs. At this time, the District approved a grade reconfiguration in the Rutland area. The reconfiguration is a significant change from the previous PIR and could provide new opportunities for the Rutland area.

In May of 2015, the PIR was updated and the project team recommended to repurpose Quigley Elementary to a middle school with a total project cost of \$18,587,818.

- The option to repurpose Quigley Elementary was submitted in the 2015/16 Capital Plan to the Ministry of Education. Staff continued discussions with the Ministry of Education regarding RMS options. Additional work was requested from Ministry staff regarding the Quigley Elementary Option. Central Okanagan Public Schools retained Meiklejohn Architects Inc. (M+MA) and LTA Consultants Inc. to assist in providing the additional information and details to update the Option. The requests from the Ministry were to review the possibilities for reducing the initial project costs. A revised plan and costs was submitted to the Ministry in March 2016 with a cost retrofit, not including Neighbourhoods of Learning, of \$11.8 million.
- After Ministry review, the Ministry requested another update to the PIR to add the Neighbourhoods of Learning component into the plan and update the costs to reflect the entitled floor area based on the Ministry Design Standards.

- In September 2016, staff submitted the PIR update with a cost retrofit and expansion of \$14.5 million. Staff continued discussions with the Ministry to amend the PIR with a submission in February 2017.
- The School District received approval from the Ministry of Education in March 2017 to proceed to the next step of the process and submit a Project Development Report (PDR) by September 29, 2017. The most recent option approved by the Board was to repurpose Quigley Elementary School to a middle school and close Rutland Middle School. The Project Definition Report process defined the scope, schedule and budget for the project in greater detail
- A project team of educators, admin staff, the architect and building consultants was created to discuss the needs for a middle school in Rutland. The process and discussion focused on the growth in the area, the new class size requirements and creating an environment that is based on 21st Century Learning that is identified in the Long Term Facility Plan.
- Enrolment in the Rutland area has been relatively predictable in the past and that should continue into the future. Appendix B shows the growth in the area. The PIR identified the capacity of RMS to be 650; however, considering the existing enrolment in RMS has 535 students in 23 classrooms, to accommodate growth and the class size requirements that are implemented this September, the new middle school needs to have a capacity of 700.
- The District has identified that school designs should accommodate 21st Century Learning environments. To achieve this in a renovation of a school, it is a challenge in a school that was built in 1978. Incorporating 21st Century Learning into any new space additions attaching to an older building creates construction challenges and this increases costs. With these challenges and focusing on the issues, many iterations of the building were done that cumulated in the final draft plan. The final draft plans to be submitted with the PDR. The project cost for the Quigley repurpose, including the Neighbourhoods of Learning component, is \$35,903,140. The Ministry has requested a comparison for a new school constructed on the Quigley site and the cost was identified as \$ 37,889,923.
- Capital Project Officers from the Ministry of Education met with senior staff from the District on May 10, 2018. They indicated that the Ministry could not support the removal of an Elementary school to accommodate Rutland Middle School as the Central Okanagan School District is a growing District.
- Ongoing discussions have continued to investigate options for the Replacement of Rutland Middle School.

4.0 POINTS FOR CONSIDERATION

- a) Rutland Middle School is the first priority on the Replacement category in the District's Five Year Capital Plan.

- b) The District's Long-Term Facility Plan indicates a capacity of 650 students is the optimum capacity for a middle school. Due to growth and class size changes the capacity for the new middle school is proposed at 700.
- c) RMS needs considerable upgrades to most of the major building systems to bring them to current school facility standards.
- d) The District continues to maintain RMS through ongoing maintenance support and Annual Facilities Projects. Total Cost of work orders dedicated to Rutland Middle school over the previous 3 years total \$ 653,879

5.0 SECRETARY-TREASURER/CFO'S COMMENTS

The District continues discussions with the Ministry of Education regarding replacement of Rutland Middle School and will continue to place it as our number one Replacement Project within our Capital Plan.