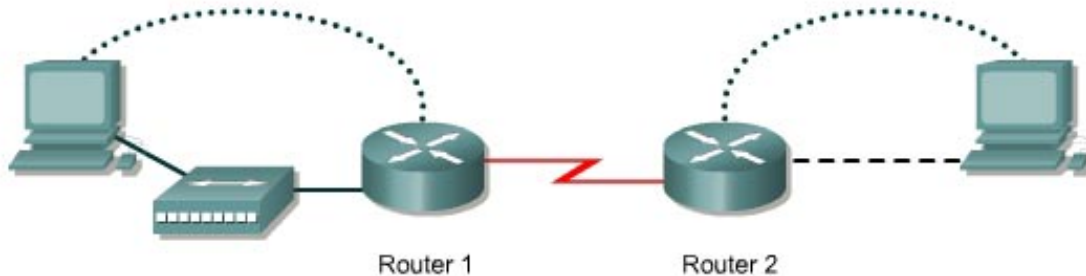


### Lab 4.2.3 Suspending and Disconnecting Telnet Sessions



Router ID	Router Name	Fast Ethernet 0 Address	Interface type	Serial 0 Address	Subnet mask	Routing protocol	Enable secret password	Enable, VTY and console password
Router 1	GAD	192.168.14.1	DCE	192.168.15.1	255.255.255.0	RIP	class	cisco
Router 2	BHM	192.168.16.1	DTE	192.168.15.2	255.255.255.0	RIP	class	cisco



#### Objective

- Establish a Telnet session with a remote router.
- Suspend and reestablish a Telnet session.
- Display active Telnet sessions.
- Disconnect a Telnet session.

#### Background/Preparation

This lab focuses on the ability to Telnet to a router, suspend that session, return to the local router console, and then reestablish the previous connection.

Cable a network similar to the one in the previous diagram. Any router that meets the interface requirements may be used. Possible routers include 800, 1600, 1700, 2500, 2600 routers, or a combination. Refer to the chart at the end of the lab to correctly identify the interface identifiers to be used based on the equipment in the lab. The configuration output used in this lab is produced from 1721 series routers. Any other router used may produce slightly different output. The following steps are intended to be executed on each router unless specifically instructed otherwise.

Start a HyperTerminal session as performed in the Establishing a HyperTerminal session lab.

**Note:** Go to the erase and reload instructions at the end of this lab. Perform those steps on all routers in this lab assignment before continuing.

### Step 1 Configure the routers

- a. If there are any difficulties configuring hostname or passwords, refer to the Configuring Router Passwords lab. If there are any difficulties configuring interfaces or the routing protocol, refer to the Configuring Host Tables lab.

### Step 2 Login to Router 1 and verify the connection to Router 2

- a. Login to the Gadsden router.
- b. Verify the connection between the two routers. Ping the serial 0 interface of the Birmingham router. If the ping is not successful, return to Step 1 and troubleshoot the configuration.

### Step 3 Telnet to a remote router

- a. Enter `telnet router-name` if IP host tables were configured. Otherwise, enter the `IP address` at the router prompt to connect to a remote router.

Enter the password `cisco` to enter the router.

- b. What prompt did the router display? \_\_\_\_\_

### Step 4 Look at the interfaces on the remote router

- a. Enter `show interface` at the router prompt.
- b. Are both the serial 0 and the FastEthernet 0 interfaces up? \_\_\_\_\_

### Step 5 Suspend the current Telnet session

- a. Enter **Ctrl+Shift+6** followed by the **x** key.

This only suspends the session and returns to the previous router. It does not disconnect from this router.

- b. What prompt did the router display? \_\_\_\_\_

### Step 6 Resume a Telnet session

- a. Press the **Enter** key at the router prompt. The router will respond with:

```
[Resuming connection 1 to 192.168.15.2 ... ]
```

- b. Press the **Enter** key.

This will resume the Telnet session that was previously suspended in Step 4.

- c. What prompt did the router display? \_\_\_\_\_

### Step 7 Close a Telnet session

- a. Enter the command `exit` while in a Telnet session.

This will terminate the Telnet session.

- b. What prompt did the router display? \_\_\_\_\_

**Note:** To disconnect from a suspended Telnet session, type `disconnect` and press **Enter**.

Upon completion of the previous steps, logoff by typing `exit`. Turn the router off.

## Erasing and reloading the router

Enter into the privileged EXEC mode by typing **enable**.

If prompted for a password, enter **class**. If “class” does not work, ask the instructor for assistance.

```
Router>enable
```

At the privileged EXEC mode, enter the command **erase startup-config**.

```
Router#erase startup-config
```

The responding line prompt will be:

```
Erasing the nvram filesystem will remove all files! Continue?  
[confirm]
```

Press **Enter** to confirm.

The response should be:

```
Erase of nvram: complete
```

Now at the privileged EXEC mode, enter the command **reload**.

```
Router(config)#reload
```

The responding line prompt will be:

```
System configuration has been modified. Save? [yes/no]:
```

Type **n** and then press **Enter**.

The responding line prompt will be:

```
Proceed with reload? [confirm]
```

Press **Enter** to confirm.

In the first line of the response will be:

```
Reload requested by console.
```

After the router has reloaded the line prompt will be:

```
Would you like to enter the initial configuration dialog? [yes/no]:
```

Type **n** and then press **Enter**.

The responding line prompt will be:

```
Press RETURN to get started!
```

Press **Enter**.

The router is ready for the assigned lab to be performed.

<b>Router Interface Summary</b>					
Router Model	Ethernet Interface #1	Ethernet Interface #2	Serial Interface #1	Serial Interface #2	Interface #5
800 (806)	Ethernet 0 (E0)	Ethernet 1 (E1)			
1600	Ethernet 0 (E0)	Ethernet 1 (E1)	Serial 0 (S0)	Serial 1 (S1)	
1700	FastEthernet 0 (FA0)	FastEthernet 1 (FA1)	Serial 0 (S0)	Serial 1 (S1)	
2500	Ethernet 0 (E0)	Ethernet 1 (E1)	Serial 0 (S0)	Serial 1 (S1)	
2600	FastEthernet 0/0 (FA0/0)	FastEthernet 0/1 (FA0/1)	Serial 0/0 (S0/0)	Serial 0/1 (S0/1)	
<p>In order to find out exactly how the router is configured, look at the interfaces. This will identify the type of router as well as how many interfaces the router has. There is no way to effectively list all of the combinations of configurations for each router class. What is provided are the identifiers for the possible combinations of interfaces in the device. This interface chart does not include any other type of interface even though a specific router may contain one. An example of this might be an ISDN BRI interface. The string in parenthesis is the legal abbreviation that can be used in IOS command to represent the interface.</p>					