



"Together We Learn"

SCHOOL DISTRICT No. 23 (CENTRAL OKANAGAN)  
1940 Underhill St., Kelowna, BC V1X 5X7  
Tel. (250)470-3256, Fax (250)860-9799, www.sd23.bc.ca

## Memorandum

**Date:** November 2, 2011  
**To:** Planning & Facilities Committee  
**From:** Alan Cumbers, Director of Operations  
**Prepared by:** Judy Shoemaker, Planning Manager

### New Information: École Glenmore Elementary – Safe Routes to School

#### 1.0 RELEVANT BOARD MOTION/DIRECTION

None

#### 2.0 BACKGROUND

A Safe Routes to School project has been undertaken by the City of Kelowna as a pilot project in the École Glenmore Elementary area. The intent of the project is to increase the number of children walking and cycling to school by providing safe routes to school and thereby reducing the traffic and associated safety concerns.

A group of École Glenmore Elementary parents known as the "Cool Ways to School Committee" collaborated with City of Kelowna - Transportation Department staff, and transportation consultants to identify problem areas and potential improvements in the vicinity of the school; such as traffic calming techniques, street crossing enhancements, intersection and pathway improvements and other upgrades.

#### 3.0 INFORMATION STATEMENT

The following is a list of improvements identified and funded by the City of Kelowna to proceed:

- a) 2.5 m asphalt walkway on the east side of Corner Rd between Mountain Ave. and the lane south of the school, traffic circle, curb extension at Corner Rd and Mountain Ave. Closure of the lane between Mountain Ave. and Tronson Dr.
- b) Mountain Ave. and Kelview St. intersection improvements
- c) Curb extensions at the existing crosswalk on Tronson Dr. west of Lowland St.
- d) Intersection improvements at High Rd. and Kennedy St.
- e) Restricted left turn from High Rd. to Lowland St. and Lowland realignment.
- f) Curb extensions at Tronson Dr. and Kennedy St. intersection.
- g) 2.5m asphalt sidewalk on Mountain Ave. between Calmels Cres. and the lane west of Glenmore Dr.
- h) Crosswalk and curb extension on Highland Dr. N at the church.
- i) Intersection improvements at Pinecrest Lane and Highland Dr. N.

Representatives from the City of Kelowna and the École Glenmore Elementary School PAC will provide a presentation at the November 16<sup>th</sup> Planning & Facilities Committee Meeting. The complete City of Kelowna report has also been made available to trustees in the Trustee Reading Library.

The creation of the proposed traffic circle at the north end of Corner Rd will encroach on the school property and will require the relocation of an existing staff parking lot and garbage dumpsters as well as retrofits to the irrigation system and chain link fencing.

There have been some concerns expressed by School District staff and the Principal regarding the traffic congestion that the closure of existing lanes and the traffic circle reconfiguration may cause if the goal to reduce traffic does not occur. As this is a pilot project, it is imperative that the City of Kelowna commit to monitor the success rate of reducing traffic and agree that any adjustments will be completed if required.

#### **4.0 DIRECTOR'S COMMENTS**

The City of Kelowna and the École Glenmore Elementary PAC have been working on these proposals for a number of years. The goal is improved safety for students. The plan to reduce access to our property for vehicles is contrary to the "traditional" planning by experts at our other school sites where we have made changes to improve access for parent vehicles. Should this pilot succeed, it will provide School District No. 23 with a new theory to use in the design of our other schools.

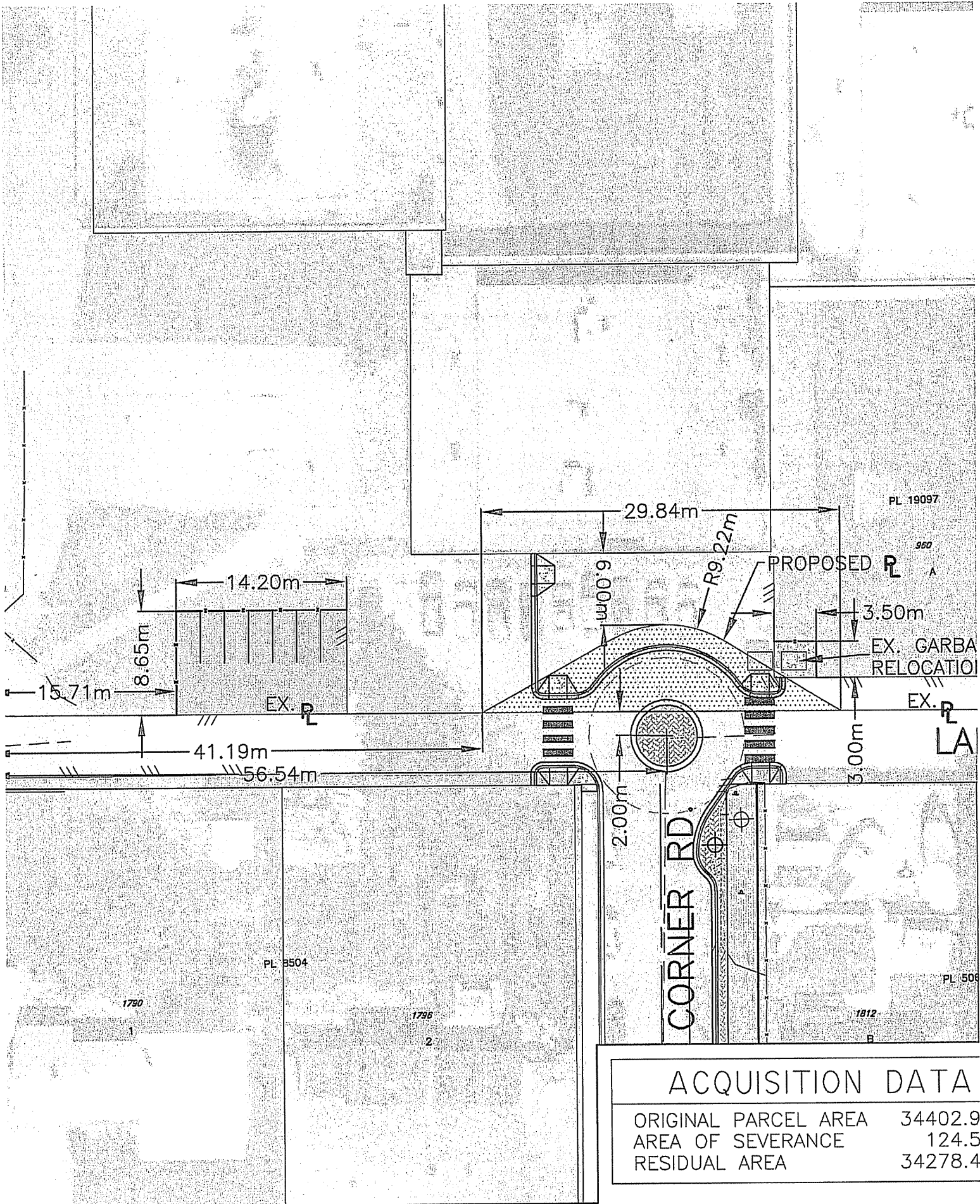
#### **5.0 NEXT STEP**

School District staff will work with the City of Kelowna to develop an agreement to accommodate the proposed traffic circle which will encroach on the school property and to relocate the existing staff parking at the end of Corner Rd. Staff intends to utilize an interim "License to Occupy" or similar legal mechanism in lieu of a land dedication or Statutory Right of Way in order to protect the lands for the future redevelopment (replacement) of the school. This agreement will be brought back to a future Planning and Facilities Committee meeting for subsequent support by the Board.

District staff will also work with the City to coordinate the construction works adjacent to and on the school property.

#### **6.0 APPENDIX**

École Glenmore Elementary Site Plan with proposed Corner Rd. traffic circle reconfiguration.



ACQUISITION DATA	
ORIGINAL PARCEL AREA	34402.9
AREA OF SEVERANCE	124.5
RESIDUAL AREA	34278.4