



“Together We Learn”

SCHOOL DISTRICT No. 23 (CENTRAL OKANAGAN)
1940 Underhill St., Kelowna, BC V1X 5X7
Tel. (250) 470-3256, Fax (250) 860-9799, www.sd23.bc.ca

Memorandum

Date: January 30, 2012
To: Board of Education
From: Hugh Gloster, Superintendent of Schools
Prepared by: Peter Molloy, Director of Instruction – Student Support Services

Information – Suspension Summary Report: 2005/2006 to 2010/2011

1.0 RELEVANT BOARD MOTION/DIRECTION

Board Policy 455 – Discipline and Regulations 455R – Discipline (*Regulations*).

2.0 BACKGROUND

Since 1991, the Board has received annually the summary of suspensions for the previous six years. Suspensions are divided into two categories:

- DEFINITE suspensions are given to those students who have committed infractions and are suspended up to a maximum of ten days.
- INDEFINITE suspensions are given to students who are repeat offenders or students who have committed very serious infractions. These students are suspended for an indefinite period of time (more than ten days) and must appear before a committee of the Board.

3.0 SUPERINTENDENT’S COMMENTS

The decision to suspend a student is only made after the circumstances have been given serious consideration. Suspension can, however, be a necessary and effective way to address challenges with student behavior. Definite suspensions (from one to ten days) are a decision of the school administration alone, while indefinite suspensions require a hearing involving a Trustee and a District staff member. All suspensions are subject to the appeal process.

Indefinite suspensions remain relatively rare considering the number of students in the School District, with only 27 taking place in total during the 2010/2011 school year. The majority of indefinite suspensions were given to middle or secondary school students for either behaviour or drug infractions. All students were invited back to an educational program (either at their school or through an alternative site) even when an indefinite suspension was confirmed.

Definite suspensions are far more common (1,494 in 2010/2011) and the reasons for suspensions as well as the grade level of affected students are more varied. Almost 100% of students return to their previous educational program at the conclusion of the definite suspension.

The total numbers for indefinite suspensions dropped from 36 in 2009/2010 to 27 in 2010/2011. Definite suspensions increased slightly from 1,443 in 2009/2010 to 1494 in 2010/2011. This ended a four year trend of declining definite suspensions in the School District, however, the increase does not appear to be statistically significant.

4.0 NEXT STEP

This information will be shared with principals and vice-principals as part of the regular examination of school data. Staff will continue to monitor the number of suspensions by grade and reason to see if there are significant changes in the patterns that have been observed over the past several years.

5.0 APPENDIX

- 5.1 Suspension Summaries: 2005/2006 to 2010/11
- 5.2 Definite and Indefinite Suspensions Data Analysis 2010-2011

INDEFINITE SUSPENSIONS

TABLE #1 - INDEFINITE SUSPENSIONS BY GRADE AND REASON

2010-2011

GRADE	ALC	ASSAULT	BEHAV	DRUGS	FIGHT	LANG	SMOKE	THEFT	TRUANT	VANDAL	WEAPN	TOTAL
2	0	0	0	0	0	0	0	0	0	0	0	0
4	0	0	0	0	0	0	0	0	0	0	0	0
5	0	0	0	0	0	0	0	0	0	0	0	0
6	0	0	1	0	0	0	0	0	0	0	0	1
7	0	0	1	0	0	0	0	0	0	0	0	1
8	0	0	1	3	0	0	0	0	0	0	0	4
9	0	1	3	1	0	0	0	0	0	0	1	6
10	0	0	2	5	0	0	0	2	0	0	0	9
11	0	0	1	2	0	0	0	1	0	0	0	4
12	0	0	0	2	0	0	0	0	0	0	0	2
PT	0	0	0	0	0	0	0	0	0	0	0	0
WE	0	0	0	0	0	0	0	0	0	0	0	0
TOTALS	0	1	9	13	0	0	0	3	0	0	1	27

2009-2010

GRADE	ALC	ASSAULT	BEHAV	DRUGS	FIGHT	LANG	SMOKE	THEFT	TRUANT	VANDAL	WEAPN	TOTAL
2	0	0	0	0	0	0	0	0	0	0	0	0
4	0	0	0	0	0	0	0	0	0	0	0	0
5	0	0	0	0	0	0	0	0	0	0	0	0
6	0	0	0	0	0	0	0	0	0	0	0	0
7	0	0	1	0	0	0	0	0	0	0	0	1
8	0	1	1	2	0	0	0	0	0	0	0	4
9	0	1	4	3	0	0	0	0	0	1	0	9
10	0	0	2	11	0	0	0	0	1	3	1	18
11	0	0	1	3	0	0	0	0	0	0	0	4
12	0	0	0	0	0	0	0	0	0	0	0	0
PT	0	0	0	0	0	0	0	0	0	0	0	0
WE	0	0	0	0	0	0	0	0	0	0	0	0
TOTALS	0	2	9	19	0	0	0	0	1	4	1	36

2008 – 2009

GRADE	ALC	ASSAULT	BEHAV	DRUGS	FIGHT	LANG	SMOKE	THEFT	TRUANT	VANDAL	WEAPN	TOTAL
2	0	0	0	0	0	0	0	0	0	0	0	0
4	0	0	0	0	0	0	0	0	0	0	0	0
5	0	0	0	0	0	0	0	0	0	0	0	0
6	0	0	0	0	0	0	0	0	0	0	0	0
7	0	0	1	1	0	0	0	0	0	0	0	2
8	0	4	3	3	0	0	0	0	0	0	0	10
9	0	1	3	4	0	0	0	0	0	0	0	8
10	0	1	4	12	1	0	0	1	0	0	4	23
11	0	0	0	2	1	0	0	0	2	0	1	6
12	0	0	0	3	0	0	0	0	0	0	0	3
PT	0	0	0	0	0	0	0	0	0	0	0	0
WE	0	0	0	0	0	0	0	0	0	0	0	0
TOTALS	0	06	11	25	2	0	0	1	2	0	5	52

TABLE #1 - INDEFINITE SUSPENSIONS BY GRADE AND REASON - continued

2007 - 2008

GRADE	ALC	ASSAULT	BEHAV	DRUGS	FIGHT	LANG	SMOKE	THEFT	TRUANT	VANDAL	WEAPN	TOTAL
2	0	0	0	0	0	0	0	0	0	0	0	0
4	0	0	0	0	0	0	0	0	0	0	0	0
5	0	0	0	0	0	0	0	0	0	0	0	0
6	0	0	0	0	0	0	0	0	0	0	0	0
7	0	0	0	0	0	0	0	0	0	0	0	0
8	0	0	1	1	0	0	0	0	0	0	0	2
9	1	1	2	5	0	0	0	0	1	0	1	11
10	0	0	2	4	0	0	0	0	0	0	0	6
11	0	0	3	1	1	0	0	0	0	0	0	5
12	0	0	0	1	0	0	0	0	0	0	1	2
PT	0	0	0	0	0	0	0	0	0	0	0	0
WE	0	0	0	0	0	0	0	0	0	0	0	0
TOTALS	1	1	8	12	1	0	0	0	1	0	2	26

2006 - 2007

GRADE	ALC	ASSAULT	BEHAV	DRUGS	FIGHT	LANG	SMOKE	THEFT	TRUANT	VANDAL	WEAPN	TOTAL
2	0	0	0	0	0	0	0	0	0	0	0	0
4	0	0	0	0	0	0	0	0	0	0	0	0
5	0	0	0	0	0	0	0	0	0	0	0	0
6	0	0	0	0	0	0	0	0	0	0	0	0
7	0	0	2	0	0	0	0	0	0	0	0	2
8	1	0	2	6	0	0	0	0	0	0	0	9
9	0	0	5	3	1	0	0	0	0	0	0	9
10	0	1	3	5	4	0	0	0	0	0	4	17
11	0	1	0	5	1	0	0	0	2	2	0	11
12	0	1	3	3	0	0	0	1	0	0	0	8
PT	0	0	0	0	0	0	0	0	0	0	0	0
WE	0	0	0	0	0	0	0	0	0	0	0	0
TOTALS	1	3	15	22	6	0	0	1	2	2	4	56

2005-2006

GRADE	ALC	ASSAULT	BEHAV	DRUGS	FIGHT	LANG	SMOKE	THEFT	TRUANT	VANDAL	WEAPN	TOTAL
2	0	0	0	0	0	0	0	0	0	0	0	0
4	0	0	0	0	0	0	0	0	0	0	0	0
5	0	0	0	0	0	0	0	0	0	0	0	0
6	0	0	0	0	0	0	0	0	0	0	1	1
7	0	0	1	0	0	0	0	0	0	0	0	1
8	0	1	1	3	0	0	0	0	0	0	2	7
9	0	1	5	4	0	1	0	0	1	0	0	12
10	0	0	1	5	3	0	0	0	0	0	1	10
11	0	0	3	3	0	0	0	0	2	0	0	8
12	0	0	1	0	0	0	0	0	0	1	0	2
PT	0	0	0	0	0	0	0	0	0	0	0	0
WE	0	0	0	0	0	0	0	0	0	0	0	0
TOTALS	0	2	12	15	3	1	0	0	3	1	4	41

TABLE #2 - INDEFINITE SUSPENSIONS BY GENDER AND REASON**2010-2011**

	ALC	ASSAULT	BEHAV	DRUGS	FIGHT	LANG	SMOKE	THEFT	TRUANT	VANDAL	WEAPON	TOTAL
Female	0	0	3	2	0	0	0	2	0	0	0	7
Male	0	1	6	11	0	0	0	1	0	0	1	20
Total	0	1	9	13	0	0	0	3	0	0	1	27

2009-2010

	ALC	ASSAULT	BEHAV	DRUGS	FIGHT	LANG	SMOKE	THEFT	TRUANT	VANDAL	WEAPON	TOTAL
Female	0	0	1	8	0	0	0	0	0	0	0	9
Male	0	2	8	11	0	0	0	0	1	4	1	27
Total	0	2	9	19	0	0	0	0	1	4	1	36

2008-2009

	ALC	ASSAULT	BEHAV	DRUGS	FIGHT	LANG	SMOKE	THEFT	TRUANT	VANDAL	WEAPON	TOTAL
Female	0	0	2	5	0	0	0	0	1	0	0	8
Male	0	6	9	20	2	0	0	1	1	0	5	44
Total	0	6	11	25	2	0	0	1	2	0	5	52

2007-2008

	ALC	ASSAULT	BEHAV	DRUGS	FIGHT	LANG	SMOKE	THEFT	TRUANT	VANDAL	WEAPON	TOTAL
Female	1	1	3	3	0	0	0	0	0	0	1	9
Male	0	0	5	9	1	0	0	0	1	0	1	17
Total	1	1	8	12	1	0	0	0	1	0	2	26

2006-2007

	ALC	ASSAULT	BEHAV	DRUGS	FIGHT	LANG	SMOKE	THEFT	TRUANT	VANDAL	WEAPON	TOTAL
Female	1	2	2	7	1	0	0	0	2	2	0	17
Male	0	1	13	15	5	0	0	1	0	0	4	39
Total	1	3	15	22	6	0	0	1	2	2	4	56

2005-2006

	ALC	ASSAULT	BEHAV	DRUGS	FIGHT	LANG	SMOKE	THEFT	TRUANT	VANDAL	WEAPON	TOTAL
Female	0	0	2	2	0	0	0	0	0	0	0	4
Male	0	2	10	13	3	1	0	0	3	1	4	37
Total	0	2	12	15	3	1	0	0	3	1	4	41

TABLE #3 - INDEFINITE SUSPENSIONS BY GENDER AND GRADE**2010-2011**

	gr3	gr4	gr5	gr6	gr7	gr8	gr9	gr10	gr11	gr12	PT	WE	TOTAL
Female	0	0	0	0	0	0	1	4	2	0	0	0	7
Male	0	0	0	1	1	4	5	5	2	2	0	0	20
	0	0	0	1	1	4	6	9	4	2	0	0	27

2009-2010

	gr2	gr4	gr5	gr6	gr7	gr8	gr9	gr10	gr11	gr12	PT	WE	TOTAL
Female	0	0	0	0	0	0	2	6	1	0	0	0	9
Male	0	0	0	0	1	4	7	12	3	0	0	0	27
0	0	0	0	0	1	4	9	18	4	0	0	0	36

2008-2009

	gr2	gr4	gr5	gr6	gr7	gr8	gr9	gr10	gr11	gr12	PT	WE	TOTAL
Female	0	0	0	0	1	1	3	1	2	0	0	0	8
Male	0	0	0	0	1	9	5	22	4	3	0	0	44
0	0	0	0	0	2	10	8	23	6	3	0	0	52

2007-2008

	gr2	gr4	gr5	gr6	gr7	gr8	gr9	gr10	gr11	gr12	PT	WE	TOTAL
Female	0	0	0	0	0	1	4	2	2	0	0	0	9
Male	0	0	0	0	0	1	7	4	3	2	0	0	17
	0	0	0	0	0	2	11	6	5	2	0	0	26

2006-2007

	gr2	gr4	gr5	gr6	gr7	gr8	gr9	gr10	gr11	gr12	PT	WE	TOTAL
Female	0	0	0	0	1	3	1	6	4	2	0	0	17
Male	0	0	0	0	1	6	8	11	7	6	0	0	39
	0	0	0	0	2	9	9	17	11	8	0	0	56

2005-2006

	gr2	gr4	gr5	gr6	gr7	gr8	gr9	gr10	gr11	gr12	PT	WE	TOTAL
Female	0	0	0	0	0	1	2	1	0	0	0	0	4
Male	0	0	0	1	1	6	10	9	8	2	0	0	37
	0	0	0	1	1	7	12	10	8	2	0	0	41

DEFINITE SUSPENSIONS

TABLE #4 - DEFINITE SUSPENSIONS BY GRADE AND REASON

2010-2011

GRADE	ALC	ASSAULT	BEHAV	BULLY	DRUGS	FIGHT	LANG	SMOKE	THEFT	TRUANT	VANDAL	WEAPON	TOTAL
K	0	0	4	0	0	3	0	0	0	0	0	0	7
1	0	0	5	0	0	0	1	0	2	0	0	0	8
2	0	5	6	0	0	0	0	0	0	0	0	0	11
3	0	1	3	0	0	0	0	0	1	0	0	1	6
4	0	1	11	6	0	2	0	0	0	0	0	2	22
5	0	7	36	17	1	5	1	0	2	0	0	4	73
6	1	7	37	5	1	11	5	0	3	0	0	2	72
7	2	12	38	22	5	24	5	1	4	19	1	3	136
8	5	7	85	20	29	29	11	3	4	40	6	4	243
9	4	10	102	12	65	24	22	11	5	46	4	1	306
10	3	1	44	2	69	30	1	8	10	50	5	2	225
11	6	2	46	2	71	25	1	2	2	72	1	1	231
12	14	2	47	0	24	13	1	0	5	47	0	0	153
SU	0	0	1	0	0	0	0	0	0	0	0	0	1
TOTALS	35	55	465	86	265	166	48	25	38	274	17	20	1494

2009-2010

GRADE	ALC	ASSAULT	BEHAV	BULLY	DRUGS	FIGHT	LANG	SMOKE	THEFT	TRUANT	VANDAL	WEAPON	TOTAL
K	0	0	1	0	0	0	0	0	0	0	0	0	1
1	0	2	11	0	0	0	0	0	0	0	0	0	13
2	0	0	1	0	0	0	0	0	4	0	0	0	5
3	0	2	9	1	0	3	0	0	1	0	0	0	16
4	1	3	17	3	0	10	0	0	5	0	3	1	43
5	2	8	36	8	1	15	2	0	2	0	0	4	78
6	0	8	33	10	5	15	6	0	3	0	5	1	86
7	6	6	29	6	9	24	6	0	1	0	2	2	91
8	11	12	65	13	58	30	6	4	11	12	5	4	231
9	3	5	113	18	65	31	13	11	7	34	8	3	311
10	9	3	46	1	86	34	1	1	5	50	1	0	237
11	3	0	71	1	51	14	2	6	9	61	1	0	219
12	7	3	37	0	39	10	0	0	5	10	0	0	111
SU	0	0	1	0	0	0	0	0	0	0	0	0	1
TOTALS	42	52	470	61	314	186	36	22	53	167	25	15	1443

TABLE #4 - DEFINITE SUSPENSIONS BY GRADE AND REASON - continued

2008-2009

GRADE	ALC	ASSAULT	BEHAV	BULLY	DRUGS	FIGHT	LANG	SMOKE	THEFT	TRUANT	VANDAL	WEAPON	TOTAL
K	0	0	0	0	0	0	0	0	0	0	0	0	0
1	0	0	6	1	0	3	1	0	0	0	0	0	11
2	0	1	13	2	0	3	0	0	0	0	1	1	21
3	0	3	10	2	0	2	0	0	1	0	1	0	19
4	0	7	23	3	1	11	2	0	1	0	2	1	51
5	0	5	37	4	3	24	4	0	4	0	1	1	83
6	0	5	50	14	0	27	8	0	7	0	2	1	114
7	2	6	43	19	7	27	7	1	10	13	3	1	139
8	7	13	131	16	44	28	8	18	14	40	9	5	333
9	5	7	76	11	57	35	10	7	6	63	8	3	288
10	5	2	72	5	68	25	1	1	9	70	4	0	262
11	7	4	55	0	57	28	5	3	6	43	3	6	217
12	11	0	12	0	28	13	1	1	2	8	1	1	78
TOTALS	37	53	528	77	265	226	47	31	60	237	35	20	1616

2007-2008

GRADE	ALC	ASSAULT	BEHAV	BULLY	DRUGS	FIGHT	LANG	SMOKE	THEFT	TRUANT	VANDAL	WEAPON	TOTAL
K	0	0	0	0	0	0	0	0	0	0	0	0	0
1	0	5	9	0	0	2	0	0	1	0	0	2	19
2	0	4	13	0	0	1	1	0	0	0	0	1	20
3	0	5	14	1	0	4	2	0	3	0	3	2	34
4	0	1	32	2	0	4	2	0	3	0	2	3	49
5	0	6	48	6	0	27	2	0	4	1	0	1	95
6	6	3	44	11	3	49	5	5	4	0	1	7	138
7	2	4	56	9	10	42	8	1	2	5	1	1	141
8	24	8	100	13	31	55	3	8	14	49	10	7	322
9	19	11	90	18	56	27	18	11	15	74	9	10	358
10	6	3	75	8	35	30	1	3	5	49	1	1	217
11	17	3	54	5	28	25	3	2	4	33	3	0	177
12	17	1	25	1	23	8	1	0	2	13	2	0	93
TOTALS	91	54	560	74	186	274	46	30	57	224	32	35	1663

TABLE #4 - DEFINITE SUSPENSIONS BY GRADE AND REASON - continued

2006-2007

GRADE	ALC	ASSAULT	BEHAV	BULLY	DRUGS	FIGHT	LANG	SMOKE	THEFT	TRUANT	VANDAL	WEAPON	TOTAL
K	0	1	0	0	0	0	0	0	0	0	0	0	1
1	0	3	7	0	0	2	0	0	0	0	0	0	12
2	0	6	11	0	0	1	0	0	1	0	0	0	19
3	0	6	17	0	0	6	0	0	1	0	0	0	30
4	0	2	30	3	0	15	2	0	2	0	0	1	55
5	0	3	53	2	1	16	4	1	1	1	5	1	88
6	0	7	54	9	0	29	2	3	3	1	6	5	119
7	3	11	65	17	4	43	12	1	5	34	1	3	199
8	8	8	101	16	38	52	6	9	10	49	4	7	308
9	14	9	90	29	22	44	15	17	18	85	12	5	360
10	4	0	65	8	40	53	5	3	10	72	1	5	266
11	3	1	46	1	43	20	0	8	0	60	1	1	184
12	17	1	36	1	17	12	2	4	6	21	14	2	133
TOTALS	49	58	575	86	165	293	48	46	57	323	44	30	1774

2005-2006

GRADE	ALC	ASSAULT	BEHAV	DRUGS	FIGHT	LANG	SMOKE	THEFT	TRUANT	VANDAL	WEAPON	TOTAL
K	0	0	0	0	0	0	0	0	0	0	0	0
1	0	0	9	0	0	0	0	1	0	0	0	10
2	0	3	6	0	1	0	0	0	0	0	0	10
3	0	0	11	0	4	0	0	0	0	1	0	16
4	0	5	46	0	18	0	0	0	0	1	0	70
5	0	2	53	0	12	2	0	2	0	2	2	75
6	6	2	53	1	29	7	0	3	2	2	0	105
7	4	1	82	16	21	4	1	6	24	7	1	167
8	8	4	90	32	31	11	0	2	34	1	9	222
9	2	8	95	51	44	12	5	9	74	4	1	305
10	6	4	71	41	29	0	3	2	94	0	3	253
11	8	1	58	32	15	3	4	2	70	3	1	197
12	9	1	45	9	7	0	1	2	7	1	0	82
WE												
TOTALS	43	31	619	182	211	39	14	29	305	22	17	1512

TABLE #5 - DEFINITE SUSPENSIONS BY GENDER AND REASON**2010-2011**

	ALC	ASSAULT	BEHAV	BULLY	DRUGS	FIGHT	LANG	SMOKE	THEFT	TRUANT	VANDAL	WEAPON	TOTAL
Female	14	3	99	6	87	16	14	10	10	135	4	0	398
Male	21	52	366	80	178	150	34	15	28	139	13	20	1096
	35	55	465	86	265	166	48	25	38	274	17	20	1494

2009-2010

	ALC	ASSAULT	BEHAV	BULLY	DRUGS	FIGHT	LANG	SMOKE	THEFT	TRUANT	VANDAL	WEAPON	TOTAL
Female	14	5	86	12	105	31	7	6	14	62	5	1	348
Male	28	47	384	49	209	155	29	16	39	105	20	14	1095
	42	52	470	61	314	186	36	22	53	167	25	15	1443

2008-2009

	ALC	ASSAULT	BEHAV	BULLY	DRUGS	FIGHT	LANG	SMOKE	THEFT	TRUANT	VANDAL	WEAPON	TOTAL
Female	20	11	89	17	77	22	7	10	22	101	6	1	383
Male	17	42	439	60	188	204	40	21	38	136	29	19	1233
	37	53	528	77	265	226	47	31	60	237	35	20	1616

2007-2008

	ALC	ASSAULT	BEHAV	BULLY	DRUGS	FIGHT	LANG	SMOKE	THEFT	TRUANT	VANDAL	WEAPON	TOTAL
Female	56	8	109	26	60	44	6	13	19	106	14	10	471
Male	35	46	451	48	126	230	40	17	38	118	18	25	1192
	91	54	560	74	186	274	46	30	57	224	32	35	1663

2006-2007

	ALC	ASSAULT	BEHAV	BULLY	DRUGS	FIGHT	LANG	SMOKE	THEFT	TRUANT	VANDAL	WEAPON	TOTAL
Female	20	8	107	20	38	35	12	20	17	182	9	2	470
Male	29	50	468	66	127	258	36	26	40	141	35	28	1304
	49	58	575	86	165	293	48	46	57	323	44	30	1774

2005-2006

	ALC	ASSAULT	BEHAV	DRUGS	FIGHT	LANG	SMOKE	THEFT	TRUANT	VANDAL	WEAPON	TOTAL
Female	22	5	110	49	26	7	4	7	128	4	1	363
Male	21	26	509	133	185	32	10	22	177	18	16	1149
	43	31	619	182	211	39	14	29	305	22	17	1512

TABLE #6 - DEFINITE SUSPENSIONS BY GENDER AND GRADE

2010-2011

	K	gr1	gr2	gr3	gr4	gr5	gr6	gr7	gr8	gr9	gr10	gr11	gr12	SU	TOTAL
Female	2	2	0	0	0	5	7	21	53	88	79	91	50	0	398
Male	5	6	11	6	22	68	65	115	190	218	146	140	103	1	1096
	7	8	11	6	22	73	72	136	243	306	225	231	153	1	1494

2009-2010

	K	gr1	gr2	gr3	gr4	gr5	gr6	gr7	gr8	gr9	gr10	gr11	gr12	SU	TOTAL
Female	0	0	3	0	5	3	5	15	50	101	71	69	26	0	348
Male	1	13	2	16	38	75	81	76	181	210	166	150	85	1	1095
	1	13	5	16	43	78	86	91	231	311	237	219	111	1	1443

2008-2009

	K	gr1	gr2	gr3	gr4	gr5	gr6	gr7	gr8	gr9	gr10	gr11	gr12	WE	TOTAL
Female	0	0	3	3	4	8	15	31	80	67	95	59	18	0	383
Male	0	11	18	16	47	75	99	108	253	221	167	158	60	0	1233
	0	11	21	19	51	83	114	139	333	288	262	217	78	0	1616

2007-2008

	K	gr1	gr2	gr3	gr4	gr5	gr6	gr7	gr8	gr9	gr10	gr11	gr12	WE	TOTAL
Female	0	1	0	6	2	8	17	24	101	168	77	44	23	0	471
Male	0	18	20	28	47	87	121	117	221	190	140	133	70	0	1192
	0	19	20	34	49	95	138	141	322	358	217	177	93	0	1663

2006-2007

	K	gr1	gr2	gr3	gr4	gr5	gr6	gr7	gr8	gr9	gr10	gr11	gr12	WE	TOTAL
Female	0	0	3	0	6	7	23	47	114	110	73	67	20	0	470
Male	1	12	16	30	49	81	96	152	194	250	193	117	113	0	1304
	1	12	19	30	55	88	119	199	308	360	266	184	133	0	1774

2005-2006

	K	gr1	gr2	gr3	gr4	gr5	gr6	gr7	gr8	gr9	gr10	gr11	gr12	WE	TOTAL
Female	0	2	0	3	3	5	16	26	60	73	99	46	30	0	363
Male	0	8	10	13	67	70	89	141	162	232	154	151	52	0	1149
	0	10	10	16	70	75	105	167	222	305	253	197	82	0	1512

TABLE #7 – ACTUAL NUMBER OF STUDENTS SUSPENDED

INDEFINITE SUSPENSION

	05-06	06-07	07-08	08-09	09-10	10-11
Actual Female:	3	17	9	8	9	7
Actual Male:	32	39	17	44	27	20
Actual Students:	35	56	26	52	36	27
Total Suspensions:	41	56	26	52	36	27

DEFINITE SUSPENSION

	05-06	06-07	07-08	08-09	09-10	10-11
Actual Female:	241	316	338	282	246	273
Actual Male:	676	867	778	796	743	745
Actual Students:	917	1183	1116	1078	989	1018
Total Suspensions:	1512	1774	1663	1616	1443	1494

TABLE #8 - SUMMARY OF PREVIOUS YEARS' SUSPENSIONS

	05-06	06-07	07-08	08-09	09-10	10-11
Indefinite Susp.	41	56	26	52	36	27
Definite Susp.	1512	1774	1663	1616	1443	1494

TABLE #9 - SUSPENSION SUMMARY BY SCHOOL

INDEFINITE SUSPENSIONS

MIDDLE/SECONDARY	05-06	06-07	07-08	08-09	09-10	10-11
Cst Neil Bruce Middle	2	3	1	3	0	2
Dr. Knox Middle	1	1	1	1	0	1
George Elliot	5	1	0	0	0	0
Glenrosa Middle.	9	5	4	0	2	0
Kelowna Secondary	5	13	7	11	12	8
K.L.O. Middle	2	5	1	2	1	2
Mt. Boucherie	7	9	3	7	4	3
OKM Secondary	4	8	2	10	7	3
Rutland Middle	2	1	2	3	3	1
Rutland Senior	3	6	2	10	4	3
Springvalley Middle.	0	4	3	5	3	3
Total Middle/Secondary:	40	56	26	52	36	26
ELEMENTARY						
A. S. Matheson						
Anne McClymont						
Bankhead						
Belgo						
Black Mountain						
Casorso	1					
Chief Tomat						
Chute Lake						
Davidson Road						
Dorothea Walker						
Ellison						
George Pringle						
Glenmore						
Glenrosa						
Helen Gorman						
Hudson Road						
North Glenmore						
Oyama						
North Glenmore						
Peachland						
Pearson						
Peter Greer						
Quigley						
Raymer						
Rose Valley						
Rutland Elem.						
Shannon Lake						
South Kelowna						
South Rutland						
Springvalley Elem.						1
Watson Road						
Total Elementary:	1	0	0	0	0	1
Total Middle/Secondary:	40	56	26	52	36	26
TOTAL INDEFINITES:	41	56	26	52	36	27

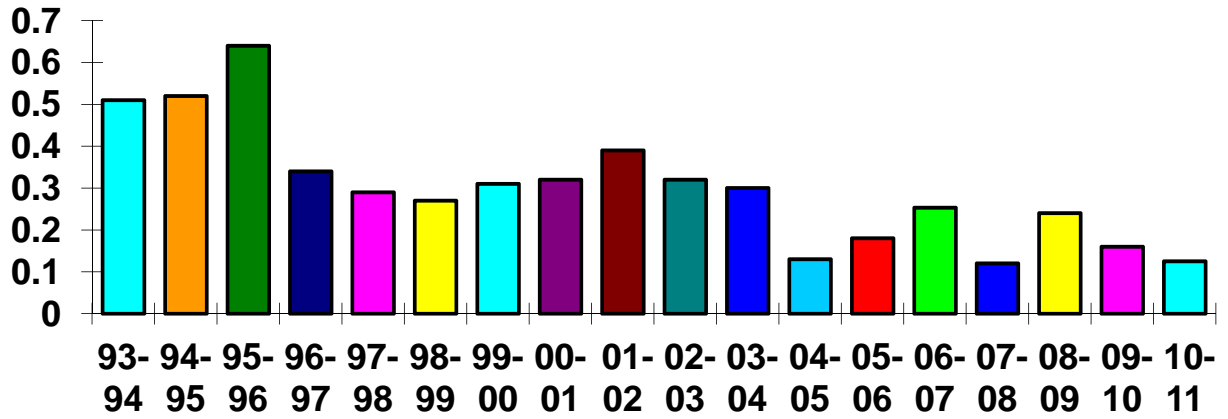
TABLE #9 - SUSPENSION SUMMARY BY SCHOOL - continued

DEFINITE SUSPENSIONS

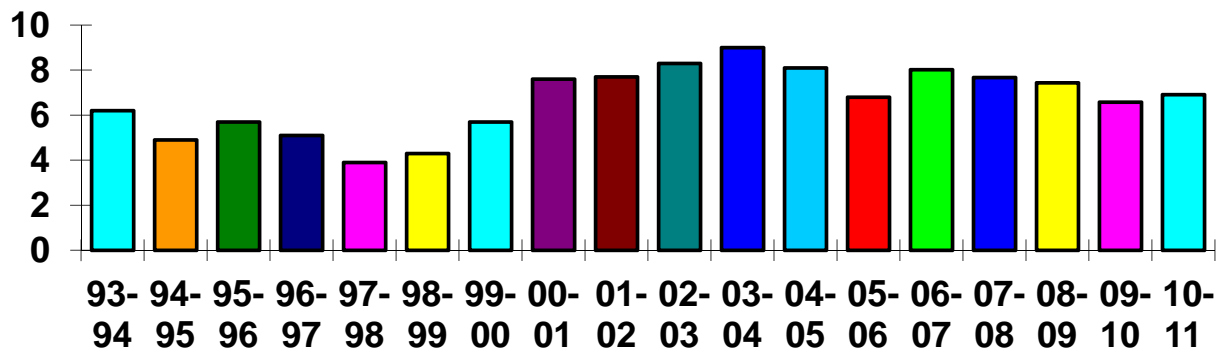
MIDDLE/SECONDARY	05-06	06-07	07-08	08-09	09-10	10-11
Constable Neil Bruce Middle	151	171	150	70	54	90
Dr. Knox Middle	107	122	45	32	36	79
George Elliot	101	150	132	164	195	115
Glenrosa Middle.	200	215	180	187	70	82
Kelowna Sec.	76	133	97	78	98	170
K.L.O. Middle	85	155	84	65	87	91
Mt. Boucherie	305	203	191	205	148	117
OKM Secondary	57	63	77	110	114	124
Rutland Middle	28	61	74	89	57	73
Rutland Senior	71	121	116	175	188	204
Springvalley Middle	24	34	113	115	133	132
Central School	0	5	6	4	8	10
Total Middle/Secondary:	1205	1433	1265	1294	1188	1287
ELEMENTARY SCHOOLS						
Anne McClymont	7	9	13	27	5	11
A. S. Matheson	2	9	8	6	18	7
Bankhead	7	5	9	19	24	15
Belgo	3	15	10	15	10	5
Black Mountain	2	12	15	13	9	2
Casorso	0	6	29	24	11	1
Chief Tomat	4	3	27	6	15	36
Chute Lake					6	4
Davidson	0	0	0	0	1	4
Dorothea Walker	1	11	16	4	6	6
Ellison	3	2	4	14	6	2
George Pringle Elem.	16	11	13	14	5	4
Glenmore	4	10	14	9	0	7
Glenrosa	19	24	4	8	5	6
Helen Gorman	4	3	4	2	2	9
Hudson Road	20	34	19	25	18	13
N. Glenmore	12	1	1	7	6	4
Oyama	36	17	20	5	4	2
Peachland	5	17	10	21	6	2
Pearson	32	48	11	7	8	11
Peter Greer	21	14	66	13	12	4
Quigley	31	34	26	16	21	3
Raymer	21	14	20	14	19	7
Rose Valley	1	7	6	8	10	10
Rutland Elem.	14	5	6	0	1	3
Shannon Lake	0	0	1	5	2	1
South Kelowna	4	13	6	5	1	3
South Rutland	7	6	12	26	7	15
Springvalley El.	27	11	28	9	13	7
Watson Road	4	0	0	0	4	3
Total Elementary Schools:	307	341	398	322	255	207
Total Middle/Secondary.:	1205	1433	1265	1294	1188	1287
TOTAL DEFINITES:	1512	1774	1663	1616	1443	1494

TABLE #10 – SUSPENSIONS AS A PERCENTAGE OF DISTRICT POPULATION

INDEFINITE SUSPENSIONS



DEFINITE SUSPENSIONS



**Definite and Indefinite Suspensions
DATA ANALYSIS 2010-2011**

Profiles (Indefinite Suspensions)

The characteristic profile of the indefinitely suspended student has not changed much this last school year. This is evident when comparing the data collected for the 2010-2011 school year to the data collected for the 2009-2010 school year. In the 2009-2010 school year the approximate ratio of indefinite suspensions for males and females was 3:1 (males versus females); it was approximately the same 3:1 for the 2010-2011 school year. The 2010-2011 ratio of male to female indefinite suspensions is virtually identical to the previous school year but neither is as high as in 2005-2006 when it was 9.25:1 (males versus females). The reduction in the number of indefinitely suspended students from 2009-2010 to 2010-2011 can be accounted for by the decrease in suspensions for male students at the Grades 9 and 10 levels (i.e. In 2009-2010 there were 27 male students indefinitely suspended while in 2010-2011 there were 15 at these grade levels). There were similar numbers of female students indefinitely suspended in 2009-2010 (i.e.9) as there were in 2010-2011 (i.e.7).

As noted above, the overall number of indefinite suspensions decreased for the 2010-2011 school year (i.e. from 36 in 2009-2010 to 27 in 2010-2011). This is believed to be the result of increased vigilance, less tolerance by school-based administrators and improved interventions and support opportunities provided to students. This is particularly true in the area of Drug related issues. This year again more options and support for students at risk of being suspended are available. These options include the Directed Suspension program as well as additional counseling intervention structures (such as the AIMS program and individual drug counseling) organized through Central School Programs and Services. In addition, the re-instatement by the Interior Health Authority of the drug education and prevention worker has increased support to students in the school district. The continued support of district mental health clinicians remains a valuable support for middle school and Central students in SD No. 23. In some cases, students who may have faced indefinite suspension receive a definite suspension and a required counseling intervention program (such as drug and alcohol, anger management or mental health support) through Central or their home school instead. These cases result from agreements being reached between the Director of Student Support Services, school administrators, the parents of the suspended students and the students themselves. The numbers are no higher for the last school year than they were for the 2009-2010 school year but they are much smaller than the numbers were 10 years ago (the numbers then were 90 to well over 100 a year. This data is still available on file.).

Male students who were indefinitely suspended were predominantly at the grade 9 and 10 levels (55.6% of all male indefinite suspensions). Most categories of suspensions of males showed little or no increase or decrease over the proceeding school years. Two exceptions to this were the categories of “drugs” (down from 19 to 13) and “assaults” (down from 4 to 0). The decrease particularly in “drug” related indefinite suspensions is likely due to increased options for administrators who are dealing with students caught more than once “under the influence”. The theft category showed an increase in numbers (from 0 to 3), likely the result of vigilance by staff. The overall decrease in male indefinite suspensions is again is likely the result of the impact of the administrators and staff vigilance.

Indefinite suspensions for male students were most common in the following categories:

- Behaviour Issues (33.3%) - 9 of the 27 indefinite suspensions
- Drug related issues (48.1%) - 13 of the 27 indefinite suspensions

The number of males indefinitely suspended decreased by 9 between the 2009-2010 and 2010-2011 school years. As well, there was a slight decrease in female suspensions (i.e., by 2). Indefinite suspensions for females were in grades 9, 10 and 11. The largest decrease of any notable size by suspension category was for “drugs” (from 8 to 2). There was a small increase in the number of female indefinite suspensions for “behaviour” (from 1 to 3). Though the number of incidents for females remains relatively small, continued monitoring of any changes is required.

Females were most commonly indefinitely suspended for:

- behaviour (42.9%) - 3 of the 7 indefinite suspensions

It should also be noted that indefinite suspensions for drug related issues, have again decreased this last school year (from 19 to 13). It is believed that this pattern reflects continued efforts to work in conjunction with the RCMP and agencies such as ARK programs on this issue through such programs as the Directed Suspension program, the AIMS program (Alternative Intervention for Marijuana Suspension) and school-based police liaison officers. Thanks must go to staff, ARK programs and to the RCMP for their continued support of these programs.

As has been noted previously, the numbers of indefinite suspensions is more reflective of the general trend of less than 60 per year that has been noted since 2005-2006. It remains encouraging that the number of indefinite suspensions continues to be below the levels of the 1990’s. With continued consistent efforts to provide appropriate proactive interventions and services by staff, other Ministries and community agencies, it is believed that the trend of lower numbers of indefinite suspensions will be seen again in 2011-2012.

Profiles (Definite Suspensions)

Overall, there was a slight increase in the number of definite suspensions issued during the 2010-2011 school year. This is the first increase in five years. The total number of definite suspension is still lower than four out of the past five years. Notably it is 280 less than the 2006-2007 school year. This is a significant decrease when compared to the number of definite suspensions in the 2006-2007 school year (1492 in 2010-2011 as compared to 1774 in 2006-2007). That data though is somewhat misleading as there was relatively speaking no increase in the number of definite suspensions for males and a significant increase in the numbers for females. Definite suspensions for males increased by 1 (from 1095 to 1096), while definite suspensions involving females increased from 348 to 398. The number of definite suspensions for males is consistently lower than the numbers from the school years 2005-2006 to 2008-2009. The trend of decreased numbers of definite suspensions experienced from 2008-2009 to 2009-2010 for females appears to have changed somewhat this last year. Upon examination of the data, it is evident that the increased number of definite suspensions for the 2010-2011 school year is the result of an increase number of suspensions for truancy.

Overall, the largest decreases in definite suspensions were seen for the following categories:

- Drugs (from 314 to 265)
- Fighting (from 186 to 166)
- Theft (from 53 to 38)

The largest increases were seen for:

- Truancy (from 167 to 274)
- Bullying (from 61 to 86)

Males were again this last year most commonly definitely suspended for:

- General behaviour (33.4%)
- Fighting (13.7%)
- Drugs (16.2%)
- Truancy (12.7%)

Males definitely suspended were most commonly in grades 8 through 11 with 63% of all such suspensions coming from these grades.

Females were most commonly definitely suspended for:

- General behaviour (24.9%)
- Truancy (33.9%)
- Drugs (21.9%)

This pattern is also consistent with the 2009-2010 data. Females definitely suspended were most commonly in grades 8, 9, 10, 11 and 12 with 90.7% of all such suspensions coming from these grades.

SUMMARY

It is felt that the decrease in indefinite suspensions from 2008-2009 to 2009-2010 and continuing in 2010-2011 represents an overall trend of fewer suspensions than 10 years ago when there were as many as 90. Fluctuation in the number of indefinite suspension has been something of a pattern for the past 6 years. That indefinite suspension rates are still well below their historic high of 139 in the 1995-1996 school year remains a sign of positive progress.

While the slight increase in the definite suspension category needs to be monitored it is also encouraging to see an overall decline occur again this last year as compared to years past (e.g., 2006-2007). It is believed that proactive initiatives in the District are having the desired impact of continuing to bring down the suspension totals in general. The reduction should be attributed to such changes as the emphasis by a number of schools on the Effective Behaviour Support program, the continued effectiveness of the school-based Mental Health clinicians, Drug and Alcohol intervention programs, and the District Behaviour Specialists as well as an increase in behaviour intervention training and in-service for staff at all levels. These programs have all had a positive effect on the school system. There continues to be a need for active monitoring of student behaviour by school staffs and for codes of conduct to be vigorously and appropriately enforced. Thanks go to the RCMP, MCFD, IHA, and ARK programs for their continued support of students in School District #23.